

PENNZWILE

Peninsula Wilderness Club meets on the second Monday of every month at 7:30 pm at the Kitsap Unitarian Fellowship Church on Perry Avenue in East Bremerton. The public is cordially invited.

March 1996

Monday Meeting

March 11th

Cascadia Marine Trail

Russ Hallsted, Vice President of the Washington Water Trails Association (WWTA), will be discussing the Cascadia Marine Trail. This extensive network of water routes stretches 150 nautical miles from Olympia to Stuart Island, the western most part of the San Juan Islands at the Canadian border,

This ambitious project is a concept of the WWTA, a private, not for profit group. Russ will present turn-of-century Puget Sound history encountered along the trail, camp sites, the water and shore conditions in each of the four major regions of trail, as well as, stewardship and environmental concerns.

Pictures will be provided by Joel Rogers, published and world renowned outdoor photographer.

IGLOOS!

MARCH 2nd and 3rd; Join Joe Weigel and Chris Hildebrand for the annual igloo building weekend at Mt. Rainier. Participants will work in teams building igloos and romping in the snow. Sipping hot chocolate, sharing laughs and camping overnight in the icy abodes add to the fun. Contact Joe at 871-0291 or Chris at 377-2604 for more information.

Crystal Mountain

MONDAY, MARCH 4th; John Knott is planning a day at Crystal Mountain. Telemarkers or downhillers can take advantage of the discount rates on the slopes. Contact John at 792-2440.

Mima Mounds

SATURDAY, MARCH 16th; Steve Vittori will be taking a day hike to the Mima Mounds in the Littlerock and Capitol State Forest near Olympia. The hike is about 5 miles with very little elevation change. The preserve includes an interpretive center and self-guided nature trail. Call Steve at 377-1869.

Skiing at Mt. Rainier

SATURDAY, MARCH 23rd; Contact John Knott for information about a day of skiing at Mt. Rainier. Call John at 792-2440



Ptarmigan Ridge Ski-Inn

WEEKEND of MARCH 30th and 31st; Join Brian Steely for the 5th "Almost Annual" Ptarmigan Ridge Ski-Inn at Mt. Baker. Participants should have snow camping experience and be prepared for backcountry ski conditions of a moderate level and above. Contact Brian at (360)297-3825.

Day Hike

SATURDAY, MARCH 30th; Paul Mertel will be scouting the Lower Lena and other low elevation trails to find a fun and suitable trek for winter hiking conditions. Call Paul at (360)297-7715 to see what he has in store.

Lake Wynochee Day Hike

SUNDAY, MARCH 31st; Spend the day hiking the Lake Wynochee Shore Trail. This is a 12 mile trek with some up and down elevation gains as the trail follows the shoreline. Hikers will enjoy views of the lake and pass through second growth and virgin forests of predominantly fir and hemlock. Contact Joe Weigel at 871-0291 or Doug Savage at 698-9774 for more details.

Havasu Canyon

MARCH 31st thru APRIL 6th; Join Dave Cossa for his annual adventure in the Grand Canyon. Fly to Las Vegas; then reach Kingman, Arizona by rental car. Horses will carry packs to the campsite at the Supai Indian Village. Four days will be spent exploring the geology, wildlife and flora of the canyon.

Contact Dave at 871-5577 by March 10th. The cost of the trip is about \$350.

Kayaking Class

WEEKEND of APRIL 13th and 14th; Pacific Water Sports will present a basic sea kayaking class in Port Orchard over the weekend of April 13th and 14th. The cost is \$95.00 for the two day class which includes 6 hours of classroom instruction, two hours of swimming pool instruction and an outing on the water on Sunday. Contact Bert Cripe at 895-4299 for enrollment forms and information. Rental boats are available for a fee of \$50.00.

Upper Umptanum Creek

WEEKEND of APRIL 20th and 21st; Join Ted Wiles for a weekend of hiking and camping at Upper Umptanum Creek near Yakima. Possible trails include Umptanum Creek Falls, part of the Manastash Ridge and the Audobon Camp, home to 70 species of birds. Elevation gains are minimal and trail lengths vary from 2 to 4 miles round trip. Saturday night will be spent car camping. Call Ted at 876-5718.



Copper Creek Ski Hut

March 9th & 10th; The last group of Mt. Tahoma Ski Hut participants will be heading to Copper Creek with Tony Abruzzo. Tony can be reached at 871-5754.

Lake Louise Get-Away

MARCH 13th thru 17th; Participants in Chris Bell's winter escape to Lake Louise in Canada can reach him at 876-4800 or 871-9414.

Bowron Lakes Canoe Trip

JULY 14th thru 20th; This 74 mile trip of lakes, rivers and a few portages, should provide sightings of moose, bear, beavers, eagles and many other birds and wildlife, as well as the beautiful British Columbia Wilderness.

Experience is helpful, but not necessary. Canoes can be rented at the lakes. Call Megan Klein at 871-6014.

Mt. St. Helens

EARLY JULY; Doug Savage is making early arrangements for a July trip on the newly opened trail around Mt. St. Helens. The trail is 32 miles. Doug is considering doing the trek in anywhere from one to four days depending on the insanity of those wishing to join him. Contact Doug at 698-9774

NOTE Date Change



Potluck Dinner at 6:00

Bring your favorite dish to share. The hall has an oven and stove. Dancing will follow post-dinner clean-up.

Admission Free!

SPRING FLING!

Friday, April 19th

6:00 pm to Midnight

**at Silverdale VFW
on Central Valley Road**

**Music by
North Star Blues Band**

**PWCers & Guests
Welcome!**



**Dancing 8:00 to
midnight**

Enjoy the swing and blues
tunes of the North Star
Blues Band.

Questions? Call Alice Savage
at (360)638-2597.

Bring your own alcohol, and please drink responsibly.

misc business

Interested Members Meeting

THURSDAY, MARCH 14th, March's Interested Members meeting will be at Chris Hildebrand's in Central Kitsap beginning at 7:00 pm. This relatively small gathering is used to organize club business and upcoming activities. New members will find this a great opportunity to be introduced to other PWCers. Call Chris at 377-2604 for directions

New Members

The PWC welcomes the following new members for the month of February:

Meredith & Wallace Anderson
Judith Ann Black
Carole Gregory
Terry Lugar
Rod Murphy
John Rolland
Mike & Linda Rowley
Nina Seaberg
Stephen Springate

Door Prize

Congratulations to Bob Izzi, winner of February's door prize, a Symphony gas latern. All members attending the Monday night meeting can enter the drawing for great outdoor recreation gifts. Thanks to Mount Constance Mountain Shoppe for donating the monthly door prize.

Address Changes

To change the address to which your newsletter is delivered, notify Jim Luddon at the following address: 165 NW Alta Drive; Bremerton, WA 98310. You can also change your address at the time you pay your annual dues.

Newsletter Contributions



Articles, trip reports, interviews, announcements, etc for the PENWICLE can be sent to: Teresa Miller, P.O. Box 3163, Bremerton, WA 98310; Or, phone 373-6781. The deadline for inclusion in next month's publication is the 17th of each month. The earlier material is submitted, the better. Please include your name and telephone number with your submittals.

March Potluck


FRIDAY, MARCH 22nd, Everyone is welcome to join the fun of a potluck gathering at the home of Ramona and Russ Childers in the Port Orchard area starting at 6:30 pm. New members are especially encouraged to get acquainted with other PWCers in this smaller and festive setting. To RSVP and get directions, contact Russ or Ramona at 871-3331.



March PWC Calendar of Events




1996

Sun	Mon	Tue	Wed	Thu	Fri	Sat
					1	2 IGLOOS! (p1)
3 IGLOOS! (p1)	4 Skiing at Crystal Mtn (p1)	5	6	7	8	9 Copper Creek (p3)
10 Copper Creek (p3)	11 Monday Meeting Russ Hallsted	12	13 Lake Louise (p3)	14 Interested Members Meeting (p4)	15 Lake Louise (p3)	16 Lake Louise (p3) Mima Mnds (p1)
17 Lake Louise (p3)	18	19	20	21	22  POTLUCK! (p4)	23 Skiing Mt. Rainier (p2)
24	25	26	27	28	29	30 Day Hike (p2) Ptarmigan Ridge (p2)
31 Lk Wynochee (p2) Ptarmigan Ridge (p2)						



April PWC Calendar of Events

1996

Sun	Mon	Tue	Wed	Thu	Fri	Sat
	1	2	3	4	5	6
	Havasu Cnyn (p2)	Havasu Cnyn (p2)	Havasu Cnyn (p2)	Havasu Cnyn (p2)	Havasu Cnyn (p2)	Havasu Cnyn (p2)
7	8	9	10	11	12	13
	Monday Meeting			Interested Members Meeting		Kayak Class (p2)
14	15	16	17	18	19	20
Kayak Class (p2)						
21	22	23	24	25	26	27
Upper Umptanum Creek (p2)					SPRING FLING! (p3)	Upper Umptanum Creek (p2)
28	29	30				

NATURE

by Dan Halstead

Hiking through old growth ancient trees,
or skipping across sea foamed sand in a salt scented breeze,
I cherish moments like these, for here is where I find,
my peace of mind,
solitude and tranquility, stress left behind.
Swift and sinuous, snow spawned streams,
glacier sheathed mountains that are the splendor of dreams,
the crisply clean clarity of the wilderness air,
bring me closer to my higher power, nothing can compare.
Cumulus crowded desert sky,
my imagination is soaring high,
like an eagle streaking by,
nature's energy is clean and pure,
cleansing my spirit, strong and sure
When the strains of life are taking their toll,
I escape to nature for revitalizing, re-energizing of my soul.

Harry Wilson



Harry Wilson transformed his love and respect for nature into action. He devoted himself to environmental projects and issues with a passion unequaled by most. His contribution to the PWC, as well as to the Sierra Club and community environmental efforts, will be greatly missed.

Harry E. Wilson, 50, of Bremerton, died Feb. 4, 1996, at his home. He served 23 years in the Navy. Upon retiring in 1988, Harry devoted much of his time to local environmental causes. He is survived by his mother, Bernice Evans of Bremerton, and a brother, Charles Wilson of Bothell.





Dangerous Decisions by Dave Cossa

It had already been an eventful day, May 18, 1980. I was a student in a mountaineering class and we were climbing the Brothers. "Look!" someone shouted. Mt. St. Helens had just blown her top.

A boiling mass of ash ascended to the stratosphere with jagged bolts of red lightning stabbing the air below. "Oh, it's a slash burn," someone said. I was nearly as amazed by the denial as I was by the spectacle.

Several minutes later we heard three evenly spaced booms. "It's Armed Forces Day in Bremerton with a 21 Gun Salute," the same 'Doubting Thomas' said. I snorted in disbelief at his obstinance. The eruption turned out to be an omen of things to come.

"No glissading until I give the O.K.," said the climb leader as we left the summit. He remained on top to make sure everyone was accounted for.

I was in the first rope team to leave. After we descended the summit rocks to the first steep snow slope, my rope leader, Jeff, said to us, "Prepare to glissade."

"But, the climb leader said not to," I protested.

"I know," said Jeff, "But trust me; I've glissaded here before and it's safe."

I continued to argue for several minutes about runouts, visibility, being roped, etc., until he finally got exasperated and shouted at me, "I'm a rope leader and you're a student. Just do as you're told!"

My last words were, "Well, if you're sure it's safe."

And, so the glissade began. We were in a deep chute that snaked down the slope. Soon we were out of sight of the rest of the class. Then the avalanche began! "SELF ARREST!" shouted Jeff needlessly because I already had.

It was futile at first because the snow below the ice ax was moving. But, eventually I dug in and stopped. Only problem was Jeff and a huge mass of snow continued to slide. The rope got tighter and tighter until I was ripped off the slope and cartwheeled on down.

The first stage of shock set in. Disbelief. "This is a class!" I thought. "These things don't happen in classes!"

The second stage quickly followed. Panic! "Oh, yes they do!" I thought as I wildly flailed my ice ax in an attempt to stop. But I had no ax; it had been ripped from my hands. As I tumbled the rope wrapped around me pinning my arms to my sides. I slid head first, face down and almost drowned from the snow being shoved up my nose.

Down, down, down we went to the slope above the 'Hour Glass'. Then we shot through the 'Hour Glass', slamming into snowless 'Lunch Rock' and over the cliffs below. Fortunately, the mass of snow was so great it cushioned us as we hit the snowless areas.

The third stage of shock set in. Resignation. "Death is imminent," I reasoned, "when we finally run out of snow and are dashed against the rocks. Why feel the pain? Best to black out." And, so I willed myself into unconsciousness.

I awakened to an enormous tug. I was hyperventilating because the rope was wrapped tightly around my chest. Less than 5 feet away there was no snow, only rocks. I could hear Jeff behind me screaming for help. He had fallen into a moat and was buried up to his chin in snow. His pack was preventing a large mass of snow from covering his head.

(continued on page 7)

(continued from page 6)

"Just a minute," I objectively said between gasps. Just - as soon - as - I - catch - - my breath. The third member of our team sat silently in shock, unable to move or help. After a while I unroped and helped Jeff dig out.

Meanwhile, frantic screams for help could be heard several hundred yards upslope. Two other rope teams had also started to glissade and had been caught in the avalanche. Someone had been buried. I struggled painfully up to help. My leg hurt, but there was no time to worry about it now.

As I arrived the group was frantically trying to dig him out. Two ropes went into the snow. Ice axes were a poor substitute for the snow shovels that had been lost.

Fortunately, another party with a snow shovel passed by. After 45 minutes and 10 feet of snow, we dug a very blue student out of an air pocket. We made hoi tea for him and I decided to check out my leg.

As I pulled down my pants, I noticed the blood and then the gaping puncture wound in my

abdomen. I had stabbed myself when I first cartwheeled. I thought I could see intestines, good thing I was already in shock!

We hiked out 8 miles to the road where a plethora of rescue groups awaited. I was transported to Mason General where a surgeon wanted to operate in case of abdominal infection. The puncture wound was 2 inches deep. I basically told him to go to hell since my temperature was still normal 12 hours after the incident. I had had enough of people telling me what to do for one day.

I suppose there are many morals to this story; but, the one I carry with me to this day is to never, never, ever just do as you're told. I believe there are no rules in mountaineering, just decisions, decisions based on experience. Since I was a student in 1980, I should have obeyed the decision of the more experienced climb leader not to glissade instead of caving in to Jeff. In a sense, the entire incident was my fault for doing so.

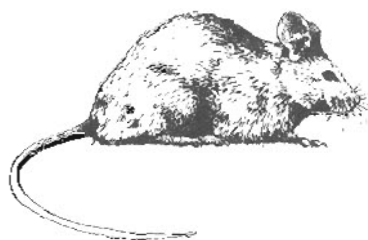
I have since glissaded the same slope. Different year, different conditions, different experience
NO RULES!

NORTHWEST FAUNA

Northwest Fauna is the title of a just released monograph on the mammals of Olympic National Park. Published by the Society of Northwestern Vertebrate Biology, it is the first publishing of a previously unpublished monograph by Victor B. Scheffer, **MAMMALS OF THE OLYMPIC NATIONAL PARK AND VICINITY (1949)**. It is of significant historical interest, as it contains not only invaluable information on Olympic Peninsula mammals in the early 1900's, but is a fascinating account of many of the people who settled the Peninsula and of the changes in the environment.

For us non-vertebrate biologists, the book (133 pages, trade paperback format) contains descriptions of the vertebrate (having backbone) mammals of the park, giving identification, measurements, occurrence and background. So now you can know for certain what species of mouse got into your pack!

Copies are available for \$15.00 from:
Janet Jones, Treasurer
Society for Northwestern Vertebrate Biology
4820 Yelm Highway SE
Suite B 175
Olympia, WA 98503



U Might Like 2 Know

Officers & Staff

President: Steve Vittori	377-1869
Secretary: Lyn Lund	377-7067
Treasurer: Kevin Kilbridge	871-2537
Editor: Teresa Miller	373-6781
Entertainment: Joe Weigel	871-0291
Assembling: Joyce Kimmel	
Refreshments: Tony Abruzzo	871-5754
Clean-Up: Diana Cripe	895-4299
New Members: Bert Cripe	895-4299

Second Bounce

Tim Rossiter reports, while shopping for nordic skis, he discovered a great place for used ski gear. The Second Bounce is in Freemont, and Tim says they have the best selection of 2nd hand ski gear he's found. They also carry close-out specials from many big name manufacturers.

Carpooling & Parking

The Unitarian Fellowship Church, where monthly Monday night meetings are held, has construction underway in the upper area where parking has previously been available. Members are urged to carpool to help ease the parking crunch.

Also, remember that parking is allowed on only one side of the driveway.



Reproduced Using Recycled Paper

PENWICKE

Peninsula Wilderness Club
P.O. Box 323
Bremerton, WA 98337-0070



MARCH 1996 - Time Dated Material