

Penwicle

Peninsula Wilderness Club Events

April 1993

Peninsula Wilderness Club meets on the second Monday of every month at 7:30 PM at the Kitsap Unitarian Fellowship Church on Perry Avenue in East Bremerton. The public is cordially invited.

Meeting **April 12th**

Wilderness Photography

Nature photographer Ron Sampson will show his photographs taken in Olympic, Mt. Rainier, Glacier, & Yellowstone Parks. Ron is also a charter member of the Peninsula Wilderness Club.

Upcoming PWC Events

Trail Maintenance Class

SATURDAY, APR 3RD; In preparation for more PWC organized trail maintenance outings (see Barnes Creek Cleanup this page), the Park Service will sponsor a short class necessary to be certified for chainsaw use within the Park. PWC point of contact is Doug Savage, 698-9774.

Trail Reconnaissance for Park

WEEKEND OF APR 3RD-4TH: Help the park check out status of trails to assess current conditions. For more information on how you can help, call Doug Savage at 698-9774.

Griff Creek Hike

SATURDAY, APR 10TH; Join Doug Savage for an interesting day hike on the Griff Creek Trail. This trail leaves from the Elwha Ranger Station and climbs 2900 feet in 2.8 miles to view points overlooking the Elwha valley and beyond. Call Doug at 698-9774 if interested.

Interested Member's Meeting

THURSDAY, APR 15TH; This month's interested member's meeting will be held at Don Paulson's home on Miami Beach, Seabeck. Come around

5 PM for a hot dog roast and barbeque on the beach. The meeting will start at 7 PM. Upcoming PWC trips and events will be planned. All PWCers are welcome. Call Don at 830-9073 for directions. Bring hot dogs, hamburger, beverages, etc.

Ice Axe Class on Mt. Ellinor

SATURDAY, APR 17TH: Climb Mt. Ellinor and learn ice axe arrest and basic snow travel techniques. Call Doug Savage at 698-9774.

(PWC Events continued next page)

PWC Events (*Continued*)

Dungeness Spit Cleanup

SUNDAY, APR 25TH; To do our part for Earth Day 1993, PWC, in conjunction with the Sierra Club, will be doing a cleanup of Dungeness National Wildlife Refuge in Sequim. Bring a lunch and rain gear. PWC point of contact is Harry Wilson, 479-1322.

Forest Plant Identification



SATURDAY, MAY 1ST:
Join Don Paulson for a
beginner's plant identification
class on the Lower Dungeness

Trail. The 6 mile hike includes a variety of plant habitats from sunny meadows to dark forests. Class size is limited to 12. Call Don Paulson at 830-9073.

SUNDAY, MAY 2ND; If there is enough interest, a second plant identification class will be held on the Duckabush River Trail with a short rock scramble out onto the "Big Hump", a huge moss-covered rock outcropping with some interesting plants and great views. This will be about an 8 mile round trip with about 2000 foot elevation gain. Call Don Paulson at 830-9073 if interested in either outing.

Grand Canyon Backpack

APR 24TH - MAY 2ND; Join Dave Cossa for seven days of backpacking in the Grand Canyon; down to the river via the Tanner Trail and out of the canyon via Grand View Trail. With only 15 miles of hiking, there will be plenty of opportunity for explorations. Call Dave at 871-5577.

Day Hike on the Dosewallips

SATURDAY, APR 24TH; Join Hildegard Stone for an easy day hike on the West Fork of the Dosewallips River. Call Hildegard at 692-5984.

Hike Tunnel Creek

SATURDAY, MAY 1ST; Join Lynn Howat for a day hike on the Tunnel Creek Trail (or alternate depending on snow conditions). Call Lynn at 598-3087.

Walkin' Jim Stoltz

FRIDAY, MAY 14TH; This is a tentative date for a PWC community wide event featuring singer, songwriter, poet, environmentalist, Walkin' Jim Stoltz. If you can help with publicity or organizing, please call Lynn Howat at 598-3087.

Canoe Winchester Wasteway

Sometime in mid May, Roger Gray is planning an overnight canoe trip on the Winchester Wasteway near Moses Lake. This is a wildlife refuge with flocks of birds, muskrats, coyotes, and other wildlife. Call Roger at 373-6642.

Morel Madness

MAY 15TH or 16TH; Join Carol Cobb for a mushrooming trip in Eastern Washington. Go for the day or car camp for the weekend. If there is enough interest, this outing will be in conjunction with the Mycological Society members. Call Carol at 876-6523.

PWC Events *(continued)*

Climb the Brothers

WEDNESDAY, MAY 19TH; Take a day off work and climb the Brothers. This will be a long march of about 20 miles and 6000 feet of elevation gain. Must have mountaineering experience (and iron buns). If interested Call Doug Savage at 698-9774.

Backpack to Lower Lena Lake

WEEKEND OF MAY 22ND - 23RD; Join Mike Gardzalla for an easy 6 mile round trip backpack to Lower Lena Lake with day hike possibilities to Upper Lena Lake. Good trip for beginners. Call Mike at 479-1276.

Barnes Creek Cleanup

Memorial Day weekend, PWC will be doing trail maintenance on the Barnes Creek Trail near Lake Crescent. Volunteers may come for just the day or may backpack in for work further up the trail. PWC point of contact is Doug Savage, 698-9774.

Rock Climbing Class

SUNDAY, JUNE 6TH; Join a beginner's rock climbing class at Green Mountain. Roger Gray is looking for people to help or donate ropes, ect. Call Roger at 373-6642.

Climb Mt. St. Helens

SATURDAY, JUNE 12TH; Doug Savage will be doing his annual climb of Mt. St. Helens. PWCrs with basic snow travel skills are welcome (limit of 12 people). Call Doug at 698-9774 to reserve your spot.

Backpack Across the Olympics

WEEK OF JULY 17TH - 25TH; Join Doug Savage for a five day backpack starting on the West Fork of the Dosewallips and ending at Staircase, via LaCrosse Pass. A climb of Mt. Anderson is also being considered. Party size is limited to 6 PWCrs. Call Doug Savage at 698-9774 if interested.

Canoe the Nation River

Roger Gray is planning a canoe or kayak trip of the Nation River in central British Columbia during the last two weeks in July. This will be about 90 miles of Class 1+ water including four lakes with no serious portages. The trip will consist of two days of driving each way and ten days of paddling through mostly wilderness areas. Should be good fishing. Call Roger at 373-6642 if interested in going along.

Columbia Ice Fields Trip

LATE JULY; Dave Cossa will be going on a climbing expedition in the Columbia Ice Fields of British Columbia. Climb Mt. Columbia and 12,500 foot Mt. Bryce. PWCrs with mountaineering experience are welcome. Call Dave at 871-5577.

Congratulations Mike

The March door prize, a set of telescoping ski poles, went to PWC'r Mike Gardzalla. The door prize is donated each month by the Mount Constance Mountain Shoppe.

PWC Profile

By Helen Schwartz

Lynn Howat, PWC President, comes by her attraction to the outdoors naturally; her father and uncle were climbers in the 30's, and both her parents belonged to the Washington Alpine Club, a cooperative at Snoqualmie Pass. Her uncle died in an avalanche and is still buried there. Her brother runs the Mt. Baker ski area, and her niece is a snowboarding champion.

Lynn grew up in a family that skied, backpacked, and climbed. The one thing she hasn't done much of that she would like to be involved in is sea kayaking.

PWC has benefitted from Lynn's expertise and leadership; she's been President twice, and secretary once. She was one of the first group of members, joining in 1979, a year after the club began.

At the time Lynn joined PWC, she had a 3 year old son and was a newly single mom looking for other backpackers with children. Her son, like her, learned about the outdoors at an early age.

Lynn's vision for the club is to meet the needs of the people who haven't gotten as involved. She wants to plan activities that appeal to a broad range of people. Lynn is dedicated to spending a lot of time greeting people, connecting, and making them feel welcome. Lynn sees PWC as the more social of the wilderness-type clubs. Others, like the Sierra Club, have a more environmental focus. "Leave that theme to them", she says, "and we'll focus on getting connected to people".

Lynn has lived in the Bremerton area for 16 years, was born in Seattle, and grew up in the

Yakima Valley. She supervises workers in protective services and foster care for DSHS where she has worked for 22 years.



Snowbowl Hut Outing

By Don Paulson

A light rain fell as we unloaded our gear at the snopark. The only snow to be seen was on the distant peaks. The weather forecast was for an 80% chance of rain with the snow level rising to 6000 feet by Sunday. Despite the gloomy conditions, the mood was jovial as we shouldered our packs (and skis) and headed up the logging road.

Our group consisted of Lynn, Joyce, Alyce, Jay-Dee, Doug, Walter, Irene, and myself. Brian Steely was kind enough to break his leg just so I could go in his place. After about 3/4 of a mile of hiking we came to the first snow. We put on our skis and continued up. The snow cover slowly improved and the rain changed to snow as we gained altitude. We reached the hut in about 2 1/2 hours (4.5 miles 1900' gain).

After a short breather and lunch we strapped on the boards and headed out for some afternoon skiing. Some of the group explored the Outer Loop trail, while the rest of us telemarked the slopes near the cabin. Ole' Jay-Dee showed us how "real men" ski by jumping off a corniced ridge top and carving flawless turns down a slope so steep that snow could hardly stick to it, all the time missing the numerous stumps that dotted the area. Doug explained that Jay-Dee could do that sort of thing and we couldn't because he was an "animal" and we were "vegetables".

(Continued next page)

Ski to Sea Team to Form

Gail Dionne is forming a team of PWC members to compete in the Ski to Sea race from Mt. Baker Ski Area to Bellingham Bay. The race involves a cross-country skier, downhill skier, runner, mountain biker, bicyclist, canoe team, and a sea kayaker. A separate person is needed for each category. We could put together a competitive team, or a group of folks who just want to have fun. The race is Memorial Day weekend. Please call Gail at 692-4471 if you are interested.

Intermediate Mountaineering Class offered

This year, during the summer, there will be an intermediate level mountaineering class offered through Olympic College. The class will most likely include climbs of Mt. Rainier, Mt. Constance, and Mt. Stuart. Call Dave Cossa at 871-5577 for more information.

Welcome to the Club

The membership of the Peninsula Wilderness Club extends a warm welcome to the following new members:

Tom Anderson
William Boilean
Donald Bundy
Evelyn Eugenis
Peter Jones
Larry Morris & family
Chuck & Marsha Pratt
Kathleen Reid

Call for Road Conditions

It's a good idea, especially this time of year, to check on road closures before heading off on a day hike or backpack. Even if you think the Forest Service roads that lead to the trail head are free of snow and open, call the Forest Service office in the area anyway and ask if the roads are open. Forest Service roads are closed for various reasons, such as logging operations, mud slides, washouts, hunting season restrictions, and regularly scheduled winter closures, etc. The snow may be gone but the road may still be closed for other reasons.



Snowbowl Hut

(Continued from page 4)

Well, we got even that night when Doug fixed us "vegetables" a wonderful stir fry using fresh veggies and marinated chicken. The "animal" had freeze dried glop in a bag; the after effects of which were the first topic of discussion the next morning.

The next day we made a few more turns in the Snowbowl (the cabin's namesake) and then skied over to High Hut. The view from High Hut was impressive, but cloud shrouded Mount Rainier never unveiled itself completely. Walter could pick out the Tacoma Narrows Bridge with his binoculars. It took only 12 minutes to glide down to the junction where we had left our packs; it took an hour going up. This will definitely be a repeat trip for the club next year.

For Sale

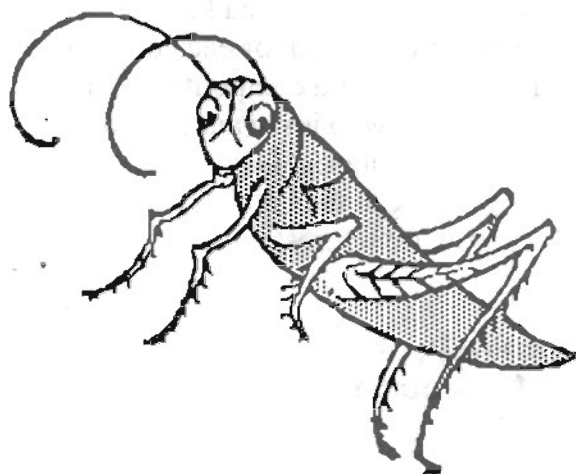
Gregory internal frame pack -
woman's. Medium bag with small harness.
Side pockets included. \$150.00
Skip or Sharon at 830-4746.

Double sea kayak, Easy Rider with car rack.
\$800.00. Call Lee at 884-4324.

Cross Country Skis;
210 cm; track ski with pattern. 3-pin
bindings; \$25.00.
200 cm Elan track skis with pattern. 3-pin
bindings; \$25.00.
New shrimp pot with spool of rope; \$40.00
or best offer.
Call Carol at 876-6523.

Wanted

Kids downhill ski stuff
Skis: 90-110 cm
Boots: 9-11
Call Jim or Mary at 779-5421.



Club Officers

PresidentLynn Howat598-3087
Vice PresHarry Wilson	...479-1322
SecretaryKathy Weigel	...871-0291
TreasurerKevin Kilbridge	871-2537
Entertainment	...Joe Weigel871-0291
Refreshments	...Sandy Sauer876-0137

Newsletter Staff

Don Paulson692-5086	(Editor)
Jim Drannan479-4171	(Proofing)
Jim Luddon373-0431	(Address data base)
Helen Schwartz	...377-9822	(Feature Writer)
Judy Guttormsen	..779-6457	(Conservation Corner)
Stenwick Family	..779-5314	(Printing/mailling)

Reproduced using recycled paper

Peninsula Wilderness Club

P.O. Box 323

Bremerton, Wa. 98310-9998

