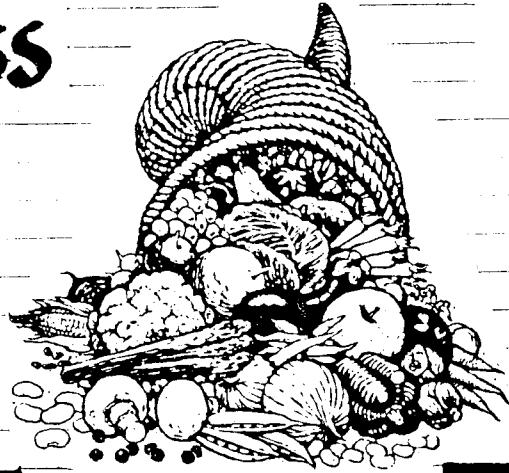


# The peninsula november wilderness club



1985

## club calendar

NOV 11

MONDAY

7:30 PM

MONTHLY MEETING

This month's entertainment will be films. We've ordered a wide selection of winter interest subjects and if they all turn up we'll have to vote on which ones to show! Just for example, one is an award winning ski mountaineering adventure and the rest, well, you'll just have to be there to find out! We will promptly start the meeting with a discussion and re-vote to break last month's tie on the Trail Association memberships. See October newsletter and articles elsewhere in this month's letter.

NOV 19

TUESDAY

7:00 PM

PAT O'HARA SHOW

This is our big event for 1985, a free slide show by a nationally acclaimed nature photographer! Remember to invite your freinds and relatives along. The show will be at the CK High School Auditorium in Silverdale--see the attached flyer for full details and then post it on a public bulletin board. We may be getting together for a quick bite to eat before the show so if you would be interested in joining call Jim Groh at 779-5421 for details.

THE PENINSULA WILDERNESS CLUB MEETS THE 2ND MONDAY OF EVERY MONTH  
AT 7:30 PM AT THE KITSAP UNITARIAN FELLOWSHIP CHURCH ON PERRY AVE.  
IN EAST BREMERTON



# Trip Reports

"CLIMBING HIGH"



BY: DAVE LADD

If a person wants to go to high altitudes he can go in any direction; I decided to go south again, but a little farther than Mexico this time.

I flew to Lima and then Cusco, Peru, and took a week going through Inca ruins. This was great, but I came to climb, too. So, I was off to La Paz, Bolivia. We used llamas and porters to carry camp gear and equipment. I was 2½ weeks climbing outside La Paz in the Andes-Cordillera Real. I climbed two named 18,000 foot peaks, an unnamed 18,000 foot peak, and for a finale, I climbed Nevado Illimani--21,200 feet.

I love to climb and enjoy the excitement of high altitude, but after 2½ weeks of sleeping at 16,000 to 18,000 feet with headaches, upset stomach, and no air, I was ready for a vacation. I flew to Rio de Janeiro, Brazil and spent four days relaxing--what a beautiful place! I had a good month off!!

"WISCONSIN RIVER TRIP"



BY: DAVID GROH

I just returned yesterday from a weekend trip down the final stretch of the Wisconsin River. Seven of us put in Friday evening about 50 miles east of Prairie Du Chien and pulled out Sunday afternoon at Bridge Port about 10 miles from the Mississippi. This is a beautiful 40 mile stretch that we did last April with a smaller group. We were the first ones down this spring and the last this fall. In spite of some "off and on" showers Friday evening and Sunday we had a great trip. Lots of birds; ducks, geese, cranes, herons, hawks and countless others including the highlight of the trip, a bald eagle. Small game and waterfowl are in season here now so we did have to dodge some gunfire and make ourselves known to hunters at some points to avoid being on the receiving end of some stray bullets and buck shot. Even though the occasional bursts of gunfire did break the natural serenity of a quiet river trip it kept all the birds in the area on the move.

## EDITORS NOTE:

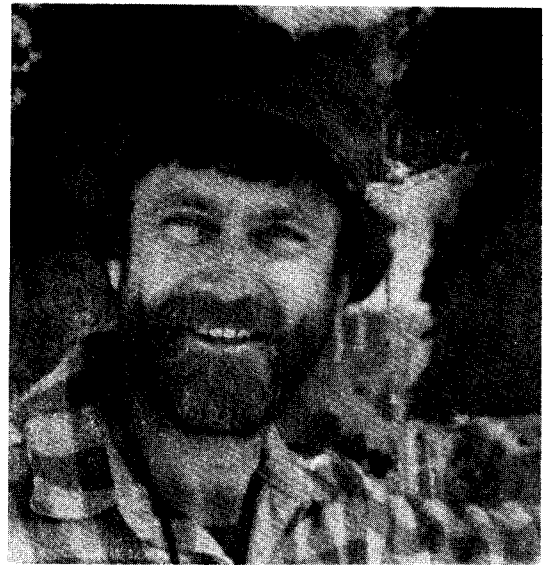
The above trip report was an accident...it's part of a letter that we received from a relative, but we thought that it was a perfect example of a trip report. It's short, concise, interesting, and you can tell the writer had a good time!

# FREE

*slide show featuring*

*Nature*

*photographer*



*Pat O'Hara*

## TUESDAY NOV. 19

**CENTRAL KITSAP HIGH SCHOOL  
BUCKLIN HILL RD SILVERDALE 7:00 P.M.**

LOCAL PHOTOGRAPHER PAT O'HARA HAS AN IMPRESSIVE LIST OF CREDENTIALS--HE HAS BEEN FEATURED IN NUMEROUS BOOKS, MAGAZINES SUCH AS SIERRA, AUDOBON AND SUNSET, TRADEBOOKS AND TEXTBOOKS. HIS WORK HAS ALSO GRACED CALENDARS, GREETING CARDS, AND POSTERS.

**\*\* SOME OF PAT'S WORK WILL BE AVAILABLE FOR SALE  
AT THE SHOW \*\***

PRESENTED BY THE PENINSULA WILDERNESS CLUB.

***for information call 779-5421 or 373-0431***

# USEFUL WINTER PHONE NUMBERS

Mt. Rainier National Park	569-2211
Mt. Baker Area (Glacier Ranger Station)	599-2714
Olympic Nat'l Park ( Port Angeles)	452-4501
" " " (24 hr recording)	452-9235
Avalanche Conditions (Cascades & Olympics)	527-6677
Washington State DOT Sno-line	976-ROAD

Information on mountain pass highway conditions can now be had by calling 1-976-ROAD. The Wahington State Department of Transportation offers this information on storm-caused highway hazards for the state's 11 mountain pass highways 24 hours a day until March 31, 1986. Callers will be billed 25 cents each call for the recorded message.

Elections for new officers were held last month. Jim Groh remains President, Jim Ludden is our new Vice President, and we retain Kathy Thomas And Dave Ladd as our Secretary and Treasurer, respectively. The vote on the "Trails Referendum" was a tie, so it will be voted on again.



Protecting our trails and wilderness areas...

By Jim Groh

As you may know, we added a referendum question to last month's ballot. Basically, we were seeking agreement to join the Washington Wilderness Coalition and the Washington Trails Association. The two organizations were briefly described in last month's newsletter and again at the meeting. Additionally, full printed literature on both organizations was available at the meeting. However, few members showed interest in the material. Despite the fact that few people bothered to review the material, there were several members concerned that we would haphazardly join these organizations without a review process and in depth investigation that would rival the FDA's own approval guidelines. Since the question was locked in a tie we will consider the issue again this month.

I would simply like everyone to consider a few points. The total cost to join both organizations per year is \$40.00. We probably spend more money on ham, hard rolls and mustard at our annual picnic than for these memberships and no one has ever suggested we serve Spam instead of ham! Give this issue some serious thought, look over the material yourself or ask someone who knows for an explanation. I, for one, would be glad to pass along the information that I have to anyone who is interested.

WET CLOTHING COLD TEMPERATURES -- In very low temperatures, wet clothing can be dried by freezing and then beating the ice crystals out of the fabric.

### FREE SEMINARS

In December the Mt. Constance Mountain Shoppe will be holding two free in-shop seminars on skiing. You can call the Shoppe for exact dates and times. 377-0668.

### OFFICERS

PRESIDENT	Jim Groh	779-5421
VICE PRES	Jim Ludden	373-0431
SECRETARY	Kathy Thomas	830-4456
TREASURER	David Ladd	373-9709

### NEWSLETTER STAFF

Mary Swoboda-Groh
779-5421
Clint Porter
377-3087
Alice Savage
638-2597

Peninsula Wilderness Club  
P.O. Box 323  
Bremerton, WA 98310-9998

BULK RATE  
U.S. POSTAGE PAID  
PERMIT # 72  
BREMERTON, WA 98310



\*\*TIME DATED MATERIAL\*\*