

OCTOBER
2015

Peninsula Wilderness Club

Peninsula

The Peninsula Wilderness Club meets on the first Wednesday of every month at 7 pm at the VFW Hall at 9981 Central Valley Rd, Bremerton, WA. The public is cordially invited.

October Presentation: *MEMBER TRIP REPORT NIGHT!*

It's been an amazing and unusually long summer hiking season this year. Come see what some of your fellow PWC members have been up to as we present a series of trip reports in slideshow format, presented by the members themselves.

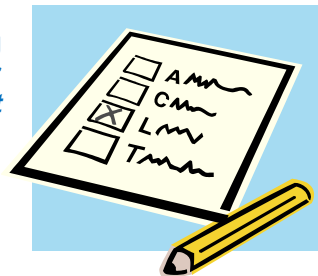


If you would like to give a short slideshow or movie, let Steve Osburn or Jay Thompson know and we'll tell you what we need from you in order to help you present your slideshow. We're looking for between five and fifteen minute presentations.



Important Announcement: It's that time of year again! Our bylaws require that we hold our annual club officer elections at the October meeting, so **COME AND VOTE FOR YOUR 2016 BOARD**. The PWC has been alive and well since the 1970's, but it takes volunteers to keep the club running. Please do your part and help by running for office, volunteering for an appointed position, sponsoring trips, and/or volunteering for hosting MAP meetings or potlucks. *The more people who volunteer, the less work it is for each volunteer!*

We will be voting for all club officer positions: President, Vice President, Secretary, Treasurer, and three board members at large. Even if not on the ballot, write-in candidates will be allowed.



Calendar

MAP: Monthly Activity Planning Meeting

Wednesday, October 21, at 7 pm, in Silverdale.
Contact: Jayson & Dorothy Shoecraft (360-697-4179)

Help schedule PWC events and outings, and discuss club business at our MAP meeting. All members are invited to attend (*BYOB if want to socialize afterward*). See the PWC Website calendar for details.

Monthly Potluck

Friday, October 30, 6:30 pm, in Bremerton.
Contact: Paul Dutky (360-479-2683)

Potlucks are a great way to meet others and learn more about the club. The host provides dessert, and attendees bring an entrée or side dish to share; and *BYOB*. See the PWC Website calendar for details.

NOTE: The master listing of trips is on the PWC Website Calendar. The list below may be incomplete or out of date, so please check the website for latest trip information.

Recurring Trips (weekly events): See the "Other Outings" section of this newsletter for these trips.

Climbing Gym Practice / Social
Tuesdays & Thursdays: Oct 1, 6, 8, 13, 15, 20, 22, 27 and 29 at 5:45 pm
Barbra Haskell, 360-981-3077, b1haskell@earthlink.net

Ask Isaac to bike, hike, or paddle (short trips based on requests) Isaac Sun, 360-930-5300, isaac@thesuns.net
Sundays: Oct 4, 11, 18 and 25 (start time based on the trip)

Regular Trips:

| Date | Outing / Meeting | Contact |
|----------|---|--|
| 10/3-4 | Backpack up N. Fork Soleduc | Barbra Haskell, 360-981-3077, b1haskell@earthlink.net |
| 10/4 | Banner Forest | Megan Thompson, 360-871-6014, belleterre2@earthlink.net |
| 10/7 | PWC General Meeting | Steve Osburn, 360-697-5982, steven_osburn@hotmail.com |
| 10/10-12 | SE Rainier Backpack | Barbra Haskell, 360-981-3077, b1haskell@earthlink.net |
| 10/12 | <i>Columbus Day (Fed. Worker Holiday)</i> | |
| 10/13 | PENWICLE Deadline | Steve Osburn, 360-697-5982, steven_osburn@hotmail.com |
| 10/14 | Map and Compass Class | Doug Terry, 360-550-7911, doug@dougterry.net |
| 10/17 | Dog Hike Green Mt. | Joe and Kathy Weigel, 360-479-5116, kmweigel@comcast.net |
| 10/18 | Hike to Touchdown City | Eve Gilluly, 206-304-4664, evagilluly@msn.com |
| 10/21 | PWC MAP Meeting | Jayson & Dorothy Shoecraft, 360-697-4179, dorothyhs@wavecable.com |
| 10/24 | Mt. St. Helens Institute Fundraiser | |
| 10/24-25 | Backpack Fricaba Traverse | Barbra Haskell, 360-981-3077, b1haskell@earthlink.net |
| 10/24 | Snowshoe class | Doug Terry, 360-550-7911, doug@dougterry.net |
| 10/30 | PWC Monthly Potluck | Paul Dutky, 360-479-2683, pdutky@gmail.com |
| 10/31 | Guillemot Cove (<i>in disguise</i>) | Linda Whitman, 360-621-8255, lmwhitman49@comcast.net |

Notes & Announcements:

- PENWICLE ARCHIVES:** Margaret Poshusta, our club historian, is building a record of the PWC history by scanning old copies of the Penwicle newsletter. Thanks to the Joe Weigel Library, we have a LOT of the history captured, but we have some missing issues and need your help! If you have any Penwicle issue from Feb 1979 – Feb 1980, Apr 1980 – Sep 1986, and Jul 1997, please let us borrow and scan them for our records! We'll get them back to you, we promise!

On the Trail with "Boots" McFarland

Reprinted with permission of the artist, Geolyn Carvin.
Check out her website at
<http://bootsmcfarland.com/home.html>



Trips and Outings...

About Our Outings...

- All PWC outings and other activities are open to anyone, but if you enjoy our club and what we do, please become a member – it's only \$25 a year, and helps keep the club running.
- For liability reasons, trip sponsors should not be considered instructors or leaders. If you are unsure of your abilities, discuss the trip thoroughly with the organizer. Each participant is responsible for his or her own comfort and safety on any outing. *Always carry the 10 essentials!*
- *Please call early!* As a courtesy to the sponsor of an outing you are joining, please try to call at least two days in advance for single-day outings, and as soon as possible for overnight outings. This allows the sponsor time to make arrangements, or alternate plans, should a trip be canceled or changed for some reason.
- Please leave pets at home when attending PWC outings unless the trip is specifically listed as welcoming them.

Carpool and Ride Sharing

We strongly encourage carpooling and ride sharing as a way to reduce impact to trailheads, minimize our environmental footprint, and reduce costs. Please be considerate to your drivers, including situations when you ride with different drivers in each direction. The amount you contribute to your driver(s) should reflect the distance driven, the cost of gas, and tolls/parking fees – short trips might be \$5 per person, long trips could be considerably more.

The WEBSITE: A Source for Outings

Our PWC Website calendar is at:

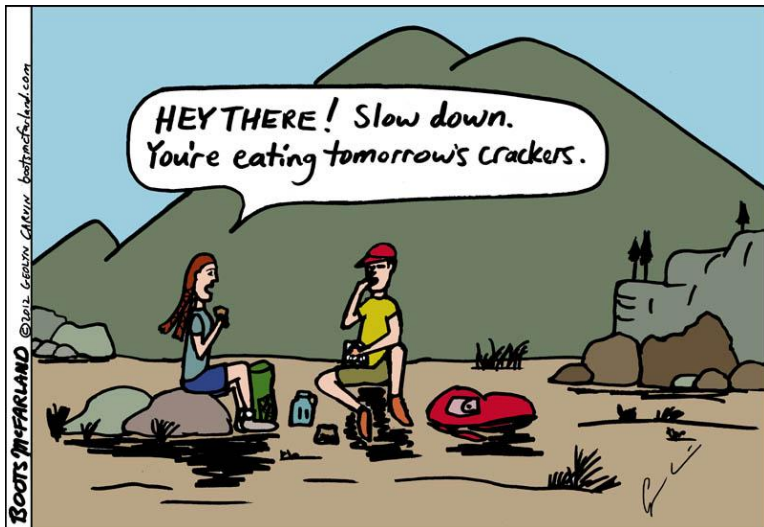
<http://www.pwckitsap.org/content/241-calendar.html>

If you don't see something that interests you in this newsletter, check the website for additional trips and last-minute trips and updates. You could also consider sponsoring a trip yourself! If you are a trip sponsor, have a new trip to list, or need to update an existing trip, please see the end of this newsletter for more information.

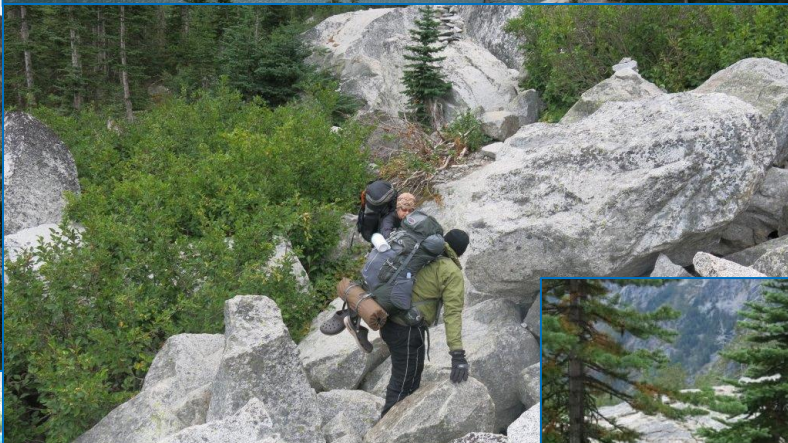
Details on Trips & Events shown on page 2 are listed in the PWC Website Calendar.

IF YOUR TRIP REQUIRES ADVANCE RESERVATIONS & PLANNING, AND YOU WANT IT ADDED TO THIS NEWSLETTER, send your trip info to BOTH the Penwicle (penwicle@hotmail.com) and our Calendar Editor (emilykgrice@gmail.com).

Trail humor (because Dropbox was pretty empty this month!)



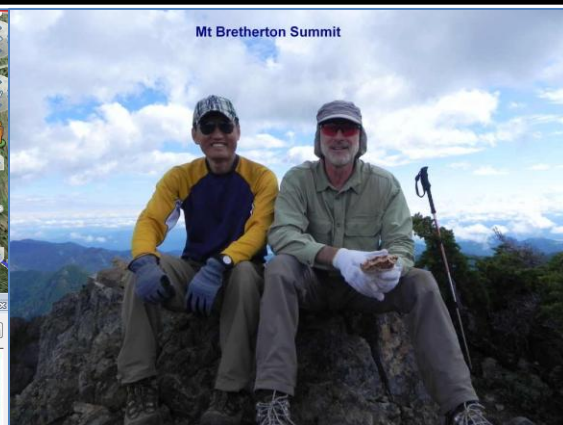
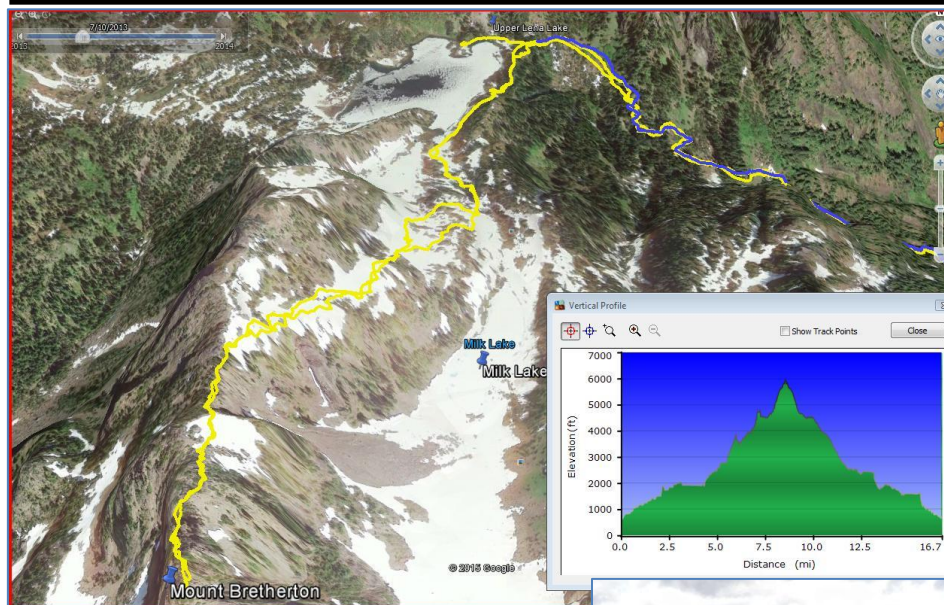
Trip Reports and Photos...



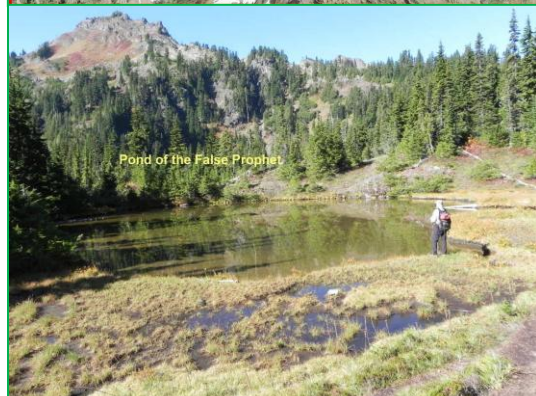
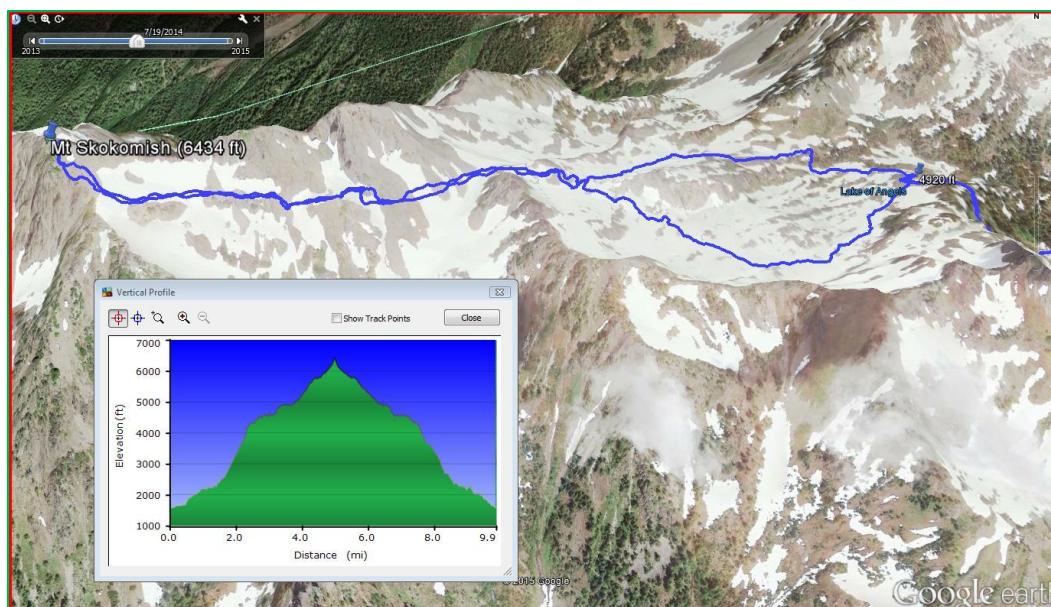
Attempting The Enchantments (Oct 30).
Photos from Barbra Haskell



Trip Reports and Photos...



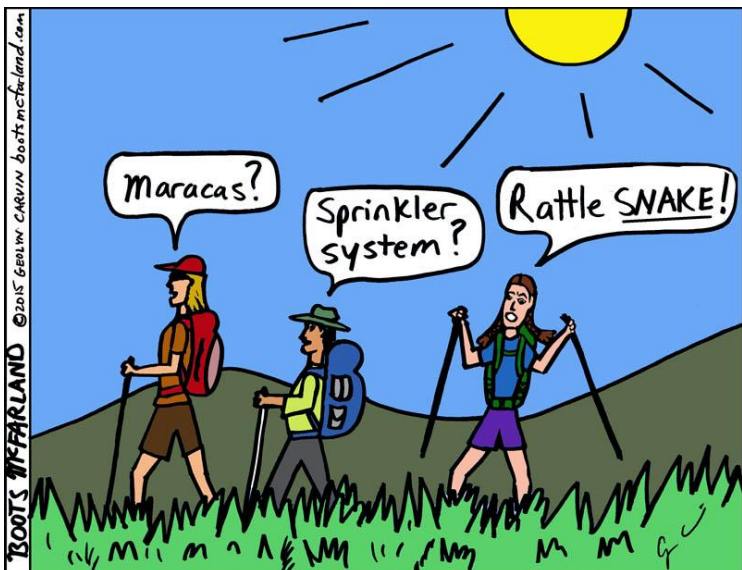
Mt. Bretherton (Sep 5). Photos by Isaac Sun



Mt. Skokomish (Sep 11). Photos by Isaac Sun

Trip Reports and Photos...

...Dropbox was a bit empty this month, so I'm using up some earlier Boots content. **HINT: Please put your trip photos in Dropbox so we can fill up 3 pages of photos!**

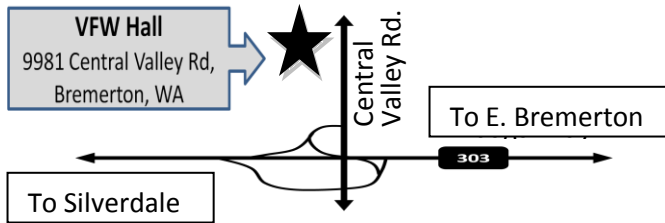


PWC Online... <http://www.pwckitsap.org/>

Go to the website to find upcoming trips, trip reports, photos, a discussion forum, and more.

PWC General Meeting

The PWC General Meeting is held the first Wednesday of each month, 7 pm, at the VFW Hall at 9981 Central Valley Road in Bremerton, WA.



If you are a guest or new member, please introduce yourself and ask for help, or look for someone who can answer questions and point out members that share your interests. However, to really get to know us – come to a potluck or go on a hike – meetings are not the best way to get to know people!

Thanks to everyone who brings snacks to meetings! Contact Doug Savage at 360-981-9333 or thehiker@comcast.net if you would like to help bring snacks to the next meeting.

Sponsor an Outing!

If you are a club member and interested in leading an outing, let us know about it so we can post it! Even if you list your trip in other forums, including it as a PWC event helps connect people and groups, and helps the club stay active. To sponsor an outing, you can come to a MAP meeting to discuss your trip, you can fill out the form on our website, or you can email or call the info directly to our Calendar Editor, Emily Grice, at emilykgrice@gmail.com (phone 206-842-7883), or to our Webmaster, Jay Thompson, at pwcadmin@pwckitsap.org (phone 360-307-0037). Any of these options will get your outing in our website calendar.

We Need Your House!



Each month the club's MAP meeting and potluck dinner need volunteer hosts willing to share their home for an evening. If you can handle a small home invasion, please contact the club secretary, Megan Thompson, at 360-871-6014.

Your Trip Photos Wanted!



Do you have some great PWC trip pictures? Each month we need your photos to share during the PWC General Meeting slide show and in the Penwicle. Contact Jay Thompson (jaythom1@hotmail.com), our interim PWC Dropbox manager, to find out how to send us your pictures – it's easy, and helps us a lot!

We also need photos for the club scrapbook – please include your name and details of the trip (people & places) and email to Sue DeArman at dearmans@comcast.net.

Joining/Renewing your Membership

To join or renew, please see the form on the back of this newsletter. PWC members receive a discount on select merchandise or services at the following businesses (check with vendor for details):

- Olympic Outdoor Center, Port Gamble, <http://www.olympicoutdoorcenter.com/>
- Commander's Beach House Bed and Breakfast, Port Townsend, <http://www.commandersbeachhouse.com/>
- Ajax Café, Port Hadlock, <http://www.ajaxcafe.com/>
- Wildernest, and The Gear Stash, Bainbridge Is., <http://wildernestoutdoorstore.com/>
- Poulsbo Running, Poulsbo, <http://www.poulsborunning.com/>
- Back of Beyond, Bainbridge Is., <http://www.tothebackofbeyond.com/>
- Bicycle Works, Bremerton, <http://bicycle-works.com>
- The Quick Fix (David Cossa, Home Handyman – 20% off), cmountaindave@aol.com

Please feel free to ask for the PWC discount when patronizing these businesses.

Email, Address or Phone No. Changes?

Contact Paul Gervais to update your contact information in our database (used for Penwicle and other information). Send your changes to Paul at:

Peninsula Wilderness Club
P.O. Box 323
Bremerton, WA 98337-0070

or email pagervader@comcast.net, or call 360-710-6363.

PENWICLE Submissions

Submissions to the PENWICLE must be received by the 13th of each month to ensure a place in the next issue. *Please send calendar entries in advance (see "Sponsor an Outing!" on this page), and for other PENWICLE submissions, send an email to Steve Osburn at penwicle@hotmail.com.*

Officers and Staff

| | | |
|----------------------------|-------------------|--------------|
| President: | Steve Osburn | 360-697-5982 |
| Vice President: | Jay Thompson | 360-307-0037 |
| Secretary: | Megan Thompson | 360-871-6014 |
| Treasurer: | Paul Gervais | 360-710-6363 |
| President Emeritus: | Shelley Fleming | 360-621-6167 |
| Members at Large: | Joe Weigel | 360-479-5116 |
| | Barbra Haskell | 360-981-3077 |
| | Linda Whitman | 360-621-8255 |
| Entertainment: | Jay Thompson | 360-307-0037 |
| Annual Picnic: | Jay Thompson | 360-307-0037 |
| Refreshments: | Doug Savage | 360-981-9333 |
| Scrapbook: | Sue DeArman | 360-697-1352 |
| Membership Database: | Paul Gervais | 360-710-6363 |
| Webmaster: | Jay Thompson | 360-307-0037 |
| Calendar Editor: | Emily Grice | 206-842-7883 |
| Dropbox Manager (Interim): | Jay Thompson | 360-307-0037 |
| PWC Historian: | Margaret Poshusta | 360-692-0126 |
| Penwicle Editor: | Steve Osburn | 360-697-5982 |

PWC

Join or Renew Membership

PWC

The Peninsula Wilderness Club (PWC) is an informal organization for people interested in active outdoor pursuits. Main activities include hiking, backpacking, mountain climbing, rock climbing, skiing, kayaking, and bicycle riding. All outings, from casual hikes to technical mountain sports, are initiated by individual members who volunteer to make minimal arrangements so an outing can take place. They do not accept responsibility for the safety, training or care of any participant, and members are expected to have whatever clothing, equipment, skills, and physical conditioning are appropriate for the outing they wish to join. Members are expected to practice responsible environmental stewardship and must accept that there are dangers and a risk of injury in most outdoor activities.

Dues are \$25 per household per year. Bring dues to a PWC General meeting, or send a check or money order to:

Peninsula Wilderness Club
P.O. Box 323
Bremerton, WA 98337-0070

Please check if: New Member(s) ☐

Renewing Member(s) ☐

Change of Address ☐

Name(s): _____

Mailing Address: _____

City, State, Zip: _____

Telephone: _____ E-mail: _____

For new members - how did you hear about us? _____

(Please print clearly)

NOTE: New members will receive the PENWICLE newsletter by email, or can download a copy via the PWC website.

☐ Check here if you do NOT wish any information to be included in the membership list distributed to members.

OCTOBER 2015 - Time Dated Material
Reproduced Using Recycled Paper

Peninsula Wilderness Club
P.O. Box 323
Bremerton, WA 98337-0070

