

SEPTEMBER  
2015

Peninsula Wilderness Club

Peninsula

The Peninsula Wilderness Club meets on the first Wednesday of every month at 7 pm at the VFW Hall at 9981 Central Valley Rd, Bremerton, WA. The public is cordially invited.

## September Presentation

### Nepal: Rebuilding Homes and Hope after the Earthquake Presented by Pam Perry September 2nd at 7pm

How can you help rebuild a country? Come find out at this presentation by Pam Perry, an experienced trekker and lover of Nepal. Beginning on April 25 this year, this small Himalayan nation began to shake and crumble. With an initial tremor of 7.8, and more than 300 aftershocks so far measuring over 5.0, this country has been shaken in unimaginable ways. Her company Grand Asian Journeys was on the front lines of providing supplies to thousands of people in more than ten villages during the relief effort that ensued. Now they are arranging a series of structured and safe rebuilding trips to help build houses for many who would otherwise not be able to do so. Whether you want to participate in the building or not, there is a trip that is right for you. Even if you can't make it to Nepal, find out how you can still help!

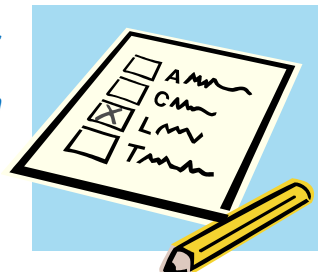


Images courtesy, Pam Perry.



**Important Announcement:** It's that time of year again! Our bylaws require that we nominate candidates in September for our annual club officer elections at the October meeting. The PWC has been alive and well since the 1970's, but it takes volunteers to keep the club running. Please do your part and help by running for office, volunteering for an appointed position, sponsoring trips, and/or volunteering for hosting MAP meetings or potlucks. *The more people who volunteer, the less work it is for each volunteer!*

**We will be looking for nominations for all club officer positions: President, Vice President, Secretary, Treasurer, and three board members at large.**



# Calendar

## MAP: Monthly Activity Planning Meeting

Wednesday, September 16, at 7 pm, in Silverdale.  
Contact: Doug Terry, 360-550-7911

Help schedule PWC events and outings, and discuss club business at our MAP meeting. All members are invited to attend (*BYOB if want to socialize afterward*). See the PWC Website calendar for details.

## Monthly Potluck

Friday, September 25, 6:30 pm, in Indianola.  
Contact: Nancy Meyer, 360-297-1298

Potlucks are a great way to meet others and learn more about the club. The host provides dessert, and attendees bring an entrée or side dish to share; and *BYOB*. See the PWC Website calendar for details.

**NOTE: The master listing of trips is on the PWC Website Calendar. The list below may be out of date.**

**Recurring Trips (weekly events):** See the "Other Outings" section of this newsletter for these trips.

Green Mountain Weekly After-Work Hike and Social (See website for sponsor and details)  
Thursdays, Sep 3, 10, 17 and 24 at 6:15 pm

Climbing Gym Practice / Social Barbra Haskell, 360-981-3077, [b1haskell@earthlink.net](mailto:b1haskell@earthlink.net)  
Tuesdays & Thursdays: Sep 1, 3, 8, 10, 15, 17, 22, 24, 29 and Oct 1 at 5:45 pm

## Regular Trips:

Date	Outing / Meeting	Contact
8/31-9/3	Enchantments	Jay Thompson, 360-509-9918, <a href="mailto:jaythom1@hotmail.com">jaythom1@hotmail.com</a>
9/2	<b>PWC General Meeting</b>	Steve Osburn, 360-697-5982, <a href="mailto:steven_osburn@hotmail.com">steven_osburn@hotmail.com</a>
9/5	Slab Camp to Upper Gray Wolf	Greg Myrick, 360-649-1648, <a href="mailto:gmyrick49@gmail.com">gmyrick49@gmail.com</a>
9/6	Mt. Ellinor	Barbra Haskell, 360-981-3077, <a href="mailto:b1haskell@earthlink.net">b1haskell@earthlink.net</a>
9/13	Mt. Jupiter	Barbra Haskell, 360-981-3077, <a href="mailto:b1haskell@earthlink.net">b1haskell@earthlink.net</a>
9/13	<b>PENWICLE Deadline</b>	Steve Osburn, 360-697-5982, <a href="mailto:steven_osburn@hotmail.com">steven_osburn@hotmail.com</a>
9/13	Heritage Park	Emily Grice, 206-842-7883, <a href="mailto:emilygrice@gmail.com">emilygrice@gmail.com</a>
9/16	<b>PWC MAP Meeting</b>	Doug Terry, 360-550-7911, <a href="mailto:doug@dougterry.net">doug@dougterry.net</a>
9/18	Camp/Hike in Mt. Adams Area	Emily Grice, 206-842-7883, <a href="mailto:emilygrice@gmail.com">emilygrice@gmail.com</a>
9/19-20	Backpack Flapjack Lakes	Barbra Haskell, 360-981-3077, <a href="mailto:b1haskell@earthlink.net">b1haskell@earthlink.net</a>
9/21-28	Trout Lake (Last 2015 Sunshine Trip)	Tony Abruzzo, 360-871-5754, <a href="mailto:abruzzo1945@gmail.com">abruzzo1945@gmail.com</a>
9/25	<b>PWC Monthly Potluck</b>	Nancy Meyer, 360-297-1298, <a href="mailto:nancymeyer@hotmail.com">nancymeyer@hotmail.com</a>
9/26-27	Backpack Upper Lena Traverse	Barbra Haskell, 360-981-3077, <a href="mailto:b1haskell@earthlink.net">b1haskell@earthlink.net</a>
10/3-4	Backpack up N. Fork Soleduc	Barbra Haskell, 360-981-3077, <a href="mailto:b1haskell@earthlink.net">b1haskell@earthlink.net</a>

## Notes & Announcements:

- OCTOBER MEETING IS MEMBER TRIP REPORT NIGHT!** Back by PWC Member demand, once a year we forgo the usual speaker to let PWC club members bring their own trip photos in a series of mini presentations. This is intended to be more than our usual trip reports section (which we will still have) – this is for a more in-depth look at your favorite trips. If you have such a trip and would like to put a presentation together, please contact Jay Thompson for details at [jaythom1@hotmail.com](mailto:jaythom1@hotmail.com).
- PENWICLE ARCHIVES:** Margaret Poshusta, our club historian, is building a record of the PWC history by scanning old copies of the Penwicle newsletter. Thanks to the Joe Weigel Library, we have a LOT of the history captured, but we have some missing issues and need your help! If you have any Penwicle issue from Feb 1979 – Feb 1980, Apr 1980 – Sep 1986, and Jul 1997, please let us borrow and scan them for our records! We'll get them back to you, we promise!
- Meeting Refreshment Coordinator Wanted!** Nancy Osburn has been working refreshments coordination for about a year and a half now – looking to pass this role to someone new! It involves arriving about a half hour early to help set up the refreshment table before meetings, keeping supplies stocked between meetings, and sending out requests for goodies a few days in advance. Overall, not too much work. Costs for supplies are reimbursed by the club.

## On the Trail with "Boots" McFarland

Reprinted with permission of the artist, Geolyn Carvin. Check out her website at <http://bootsmcfarland.com/home.html>





# Trips and Outings...

## About Our Outings...

- All PWC outings and other activities are open to anyone, but if you enjoy our club and what we do, please become a member – it's only \$25 a year, and helps keep the club running.
- For liability reasons, trip sponsors should not be considered instructors or leaders. If you are unsure of your abilities, discuss the trip thoroughly with the organizer. Each participant is responsible for his or her own comfort and safety on any outing. *Always carry the 10 essentials!*
- *Please call early!* As a courtesy to the sponsor of an outing you are joining, please try to call at least two days in advance for single-day outings, and as soon as possible for overnight outings. This allows the sponsor time to make arrangements, or alternate plans, should a trip be canceled or changed for some reason.
- Please leave pets at home when attending PWC outings unless the trip is specifically listed as welcoming them.

## Carpool and Ride Sharing

We strongly encourage carpooling and ride sharing as a way to reduce impact to trailheads, minimize our environmental footprint, and reduce costs. Please be considerate to your drivers, including situations when you ride with different drivers in each direction. The amount you contribute to your driver(s) should reflect the distance driven, the cost of gas, and tolls/parking fees – short trips might be \$5 per person, long trips could be considerably more.

## The WEBSITE: A Source for Outings

Our PWC Website calendar is at:

<http://www.pwckitsap.org/content/241-calendar.html>

If you don't see something that interests you in this newsletter, check the website for additional trips and last-minute trips and updates. If you are a trip sponsor, have a new trip to list, or need to update an existing trip, please see the end of this newsletter for more information.

***Details on Trips & Events shown on page 2 are listed in the PWC Website Calendar.***

***Below are only those trips that require advance planning and/or reservations:***

***IF YOUR TRIP REQUIRES ADVANCE RESERVATIONS & PLANNING, AND YOU WANT IT ADDED TO THIS SECTION, send your trip info to BOTH the Penwicle ([penwicle@hotmail.com](mailto:penwicle@hotmail.com)) and our Calendar Editor ([emilykgrice@gmail.com](mailto:emilykgrice@gmail.com)).***

## 2015 "Sunshine Trips"

Each year, for the past several years, Bob Brown and Tony Abruzzo have developed a spring/summer list of trips. MTTA & PWC members are invited to attend any of these trips (all or part). These "Sunshine" trips are scheduled to places offering outdoor recreational opportunities (hiking, biking, kayaking, etc.) and most importantly, blue skies and lots of sunshine. If you are interested in any of these trips, or have questions, please contact Bob Brown at 360-569-2878 or Tony Abruzzo at 360-871-5754.

**There is one remaining trip on the 2015 schedule for these trips:** September 21-28. Hiking & Biking in the Mount Adams Area. Looks like a great trip!

***More details on the above trip(s) are available on the PWC Website calendar.***

## Trip Reports and Photos...



PWC Monthly Potluck (Jul 31)  
Photos by Steve Osburn





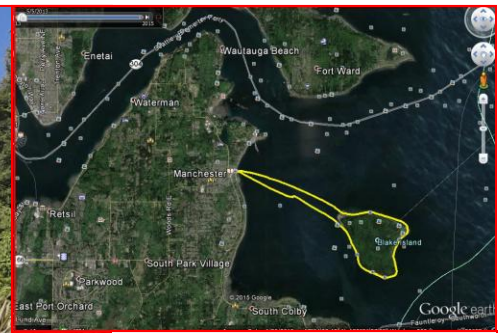
# Trip Reports and Photos..



A silhouette view of the Seattle in the background  
(little chat with Linda who was paddling back home)



Tillicum village (A concession on the Island)



Blake Island (Jul 19)  
Photos by Isaac Sun



Hawk Peak Traverse  
(Aug 1-2)  
Photos by Barbra Haskell



Health, Heritage and Hobbies Day at Keyport (Aug 5).  
Photos by Keyport Staff Photographer

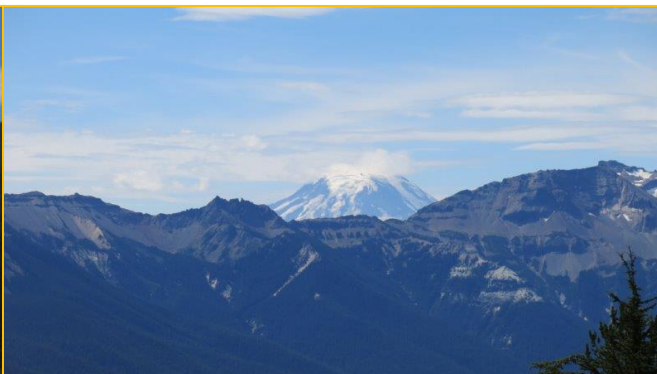




## Trip Reports and Photos...



Round Mountain (Aug 9). Photos by Barbra



Lower S. Fork Skokomish (Aug 15). Photos by Steve Osburn



North Fork Sol Duc River (Aug 15).  
Photos by Barbra Haskell



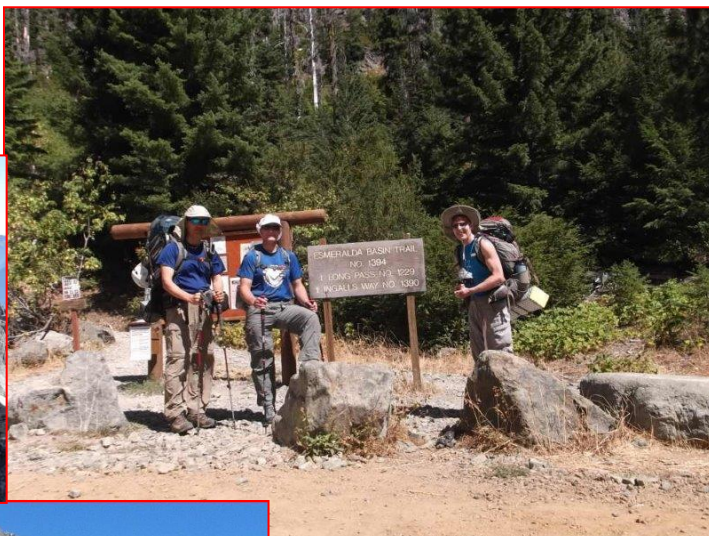


## Trip Reports and Photos...



Urban Hike  
(Aug 22)  
Photos by  
Steve Osburn

Mt. Stuart (Aug 22)  
Photos by Isaac Sun





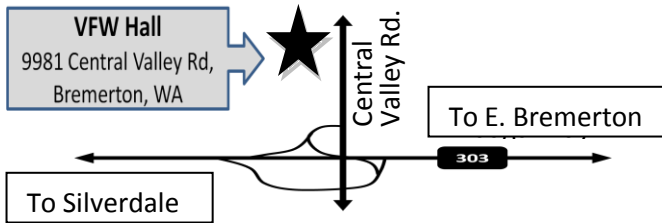
## Club News

### PWC Online... <http://www.pwckitsap.org/>

Go to the website to find upcoming trips, trip reports, photos, a discussion forum, and more.

### PWC General Meeting

The PWC General Meeting is held the first Wednesday of each month, 7 pm, at the VFW Hall at 9981 Central Valley Road in Bremerton, WA.



If you are a guest or new member, please introduce yourself and ask for help, or look for someone who can answer questions and point out members that share your interests. However, to really get to know us – come to a potluck or go on a hike – meetings are not the best way to get to know people!

Thanks to everyone who brings snacks to meetings! Contact Doug Savage at 360-981-9333 or [thehiker@comcast.net](mailto:thehiker@comcast.net) if you would like to help bring snacks to the next meeting.

### Sponsor an Outing!

If you are a club member and interested in leading an outing, let us know about it so we can post it! Even if you list your trip in other forums, including it as a PWC event helps connect people and groups, and helps the club stay active. To sponsor an outing, you can come to a MAP meeting to discuss your trip, you can fill out the form on our website, or you can email or call the info directly to our Calendar Editor, Emily Grice, at [emilykgrice@gmail.com](mailto:emilykgrice@gmail.com) (phone 206-842-7883), or to our Webmaster, Jay Thompson, at [pwcadmin@pwckitsap.org](mailto:pwcadmin@pwckitsap.org) (phone 360-307-0037). Any of these options will get your outing in our website calendar.

### We Need Your House!



Each month the club's MAP meeting and potluck dinner need volunteer hosts willing to share their home for an evening. If you can handle a small home invasion, please contact the club secretary, Megan Thompson, at 360-871-6014.

### Your Trip Photos Wanted!



Do you have some great PWC trip pictures? Each month we need your photos to share during the PWC General Meeting slide show and in the Penwicle. Contact Jay Thompson ([jaythom1@hotmail.com](mailto:jaythom1@hotmail.com)), our interim PWC Dropbox manager, to find out how to send us your pictures – it's easy, and helps us a lot!

We also need photos for the club scrapbook – please include your name and details of the trip (people & places) and email to Sue DeArman at [dearmans@comcast.net](mailto:dearmans@comcast.net).

## Club Business

### Joining/Renewing your Membership

To join or renew, please see the form on the back of this newsletter. PWC members receive a discount on select merchandise or services at the following businesses (check with vendor for details):

- Olympic Outdoor Center, Port Gamble, <http://www.olympicoutdoorcenter.com/>
- Commander's Beach House Bed and Breakfast, Port Townsend, <http://www.commandersbeachhouse.com/>
- Ajax Café, Port Hadlock, <http://www.ajaxcafe.com/>
- Wildernest, and The Gear Stash, Bainbridge Is., <http://wildernestoutdoorstore.com/>
- Poulsbo Running, Poulsbo, <http://www.poulsborunning.com/>
- Back of Beyond, Bainbridge Is., <http://www.tothebackofbeyond.com/>
- Bicycle Works, Bremerton, <http://bicycle-works.com>
- The Quick Fix (David Cossa, Home Handyman – 20% off), [cmountaindave@aol.com](mailto:cmountaindave@aol.com)

Please feel free to ask for the PWC discount when patronizing these businesses.

### Email, Address or Phone No. Changes?

Contact Paul Gervais to update your contact information in our database (used for Penwicle and other information). Send your changes to Paul at:

Peninsula Wilderness Club  
P.O. Box 323  
Bremerton, WA 98337-0070

or email [pagervader@comcast.net](mailto:pagervader@comcast.net), or call 360-710-6363.

### PENWICLE Submissions

Submissions to the PENWICLE must be received by the 13<sup>th</sup> of each month to ensure a place in the next issue. *Please send calendar entries in advance (see "Sponsor an Outing!" on this page), and for other PENWICLE submissions, send an email to Steve Osburn at [penwicle@hotmail.com](mailto:penwicle@hotmail.com).*

### Officers and Staff

President:	Steve Osburn	360-697-5982
Vice President:	Jay Thompson	360-307-0037
Secretary:	Megan Thompson	360-871-6014
Treasurer:	Paul Gervais	360-710-6363
President Emeritus:	Shelley Fleming	360-621-6167
Members at Large:	Joe Weigel	360-479-5116
	Barbra Haskell	360-981-3077
	Linda Whitman	360-731-6607
Entertainment:	Jay Thompson	360-307-0037
Annual Picnic:	Jay Thompson	360-307-0037
Refreshments:	Doug Savage	360-981-9333
Scrapbook:	Sue DeArman	360-697-1352
Membership Database:	Paul Gervais	360-710-6363
Webmaster:	Jay Thompson	360-307-0037
Calendar Editor:	Emily Grice	206-842-7883
Dropbox Manager (Interim):	Jay Thompson	360-307-0037
PWC Historian:	Margaret Poshusta	360-692-0126
Penwicle Editor:	Steve Osburn	360-697-5982

**PWC**

**Join or Renew Membership**

**PWC**

The Peninsula Wilderness Club (PWC) is an informal organization for people interested in active outdoor pursuits. Main activities include hiking, backpacking, mountain climbing, rock climbing, skiing, kayaking, and bicycle riding. All outings, from casual hikes to technical mountain sports, are initiated by individual members who volunteer to make minimal arrangements so an outing can take place. They do not accept responsibility for the safety, training or care of any participant, and members are expected to have whatever clothing, equipment, skills, and physical conditioning are appropriate for the outing they wish to join. Members are expected to practice responsible environmental stewardship and must accept that there are dangers and a risk of injury in most outdoor activities.

Dues are \$25 per household per year. Bring dues to a PWC General meeting, or send a check or money order to:

Peninsula Wilderness Club  
P.O. Box 323  
Bremerton, WA 98337-0070

Please check if: New Member(s) ☐

Renewing Member(s) ☐

Change of Address ☐

Name(s): \_\_\_\_\_

Mailing Address: \_\_\_\_\_

City, State, Zip: \_\_\_\_\_

Telephone: \_\_\_\_\_ E-mail: \_\_\_\_\_

For new members - how did you hear about us? \_\_\_\_\_

(Please print clearly)

NOTE: New members will receive the PENWICLE newsletter by email, or can download a copy via the PWC website.

☐ Check here if you do NOT wish any information to be included in the membership list distributed to members.

SEPTEMBER 2015 - Time Dated Material  
Reproduced Using Recycled Paper

Peninsula Wilderness Club  
P.O. Box 323  
Bremerton, WA 98337-0070

