

JULY  
2008

# PENNZANCE

Peninsula Wilderness Club meets on the second Monday of every month at 7 pm at the Kitsap Unitarian Universalist Fellowship on Perry Avenue in East Bremerton. The public is cordially invited.

## PWC ANNUAL PICNIC AND TALL TALE CONTEST

Monday, July 14, 6 pm until almost dark

at Raab Park in Poulsbo

Contact: Greg Myrick, 360-649-1648, gmyrick49@gmail.com

At this year's picnic, the club will be providing barbecued meats, corn on the cob, salads and desserts. Please bring your beverage of choice. We'll start at 6 pm. Come early and socialize, but if you can't come until later, we'll save you some food. There will also be a "Tall Tales" contest - the taller the better! Prizes will be awarded. (1st prize will be a tent, 2nd prize: ?) Be creative and convincing; lying is encouraged. Y'all come and see us at the picnic. We aim to have a lot of fun. The more the merrier. If you haven't had time to join us recently, come join us at the picnic. It's always a fun event.

To get to Raab Park from Highway 3: Exit Highway 3 onto Highway 305 toward Poulsbo and Bainbridge Island. Take Highway 305 into Poulsbo. Turn left at NE Hostmark Street. Turn right at NE Caldart Street. Raab Park is on your right.

\*\* Volunteers are needed for various jobs for the picnic. Call Greg if you can help! 360-649-1648 \*\*



Ice Axes on Mt. Ellinor

Photo Courtesy of Sue DeArman

### OPEN BOARD MEETING

August 7, 6 pm (Prior to MAP meeting)

Ann Richey's home in Bremerton

There will be an open board meeting at 6 pm, at Ann Richey's house, just prior to the MAP meeting. Agenda as follows.

#### *Agenda*

*Moving PWC potluck to the last Friday of the month.*

*Setting policy for loaning PWC equipment.  
(To whom should club equipment be loaned?)*

*How to improve the nomination/voting process for officers, and increase member participation.  
(How soon before the election process, should members be notified, and how should they be notified?  
Should we have a mail-in ballot?)*

*(Any other issues that members feel need to be addressed.)*

# Monthly

## MAP: Monthly Activity Planning

Thursday, July 10, 7 pm

Contact: Lynn Howat, 360-598-3087

Discuss club business and help schedule outings at Lynn's home in Suquamish.

## July Potluck

Friday, July 25, 7 pm

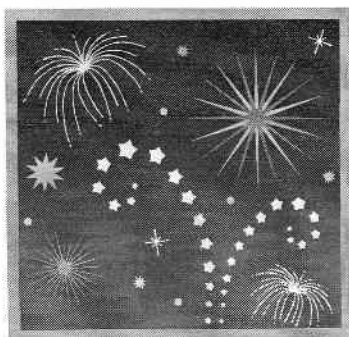
Contact: Charlie Pomfret, 360-479-7820

Visit with fellow PWCers at Charlie's home in Bremerton. Bring an entrée or side dish to share. As host, Charlie will provide the dessert.

<u>Date</u>	<u>Outing / Meeting</u>	<u>Contact</u>
Various	Illahee Preserve Work Parties	Dale Boyle, dboyle@web-o.net, 360-792-1714
7/3-7/7	Backpack Seven Lakes Basin (High Divide)	Joan Edwards, 360-509-5297
7/9 or 7/10	Hike to Camp Muir	Doug Savage, 360-698-9774
7/10	MAP Meeting	Lynn Howat, 360-598-3087
7/14	PWC Annual Picnic & Tall Tale Contest	Greg Myrick, 360-649-1648
7/17-7/20	Climb Mt. Olympus	Gary Stringer, 206-780-6760
7/18-7/20	MTTA Trail Maintenance & Hike	Emily Grice, 206-842-7883
7/18-7/20	Climb Mt. St. Helens	Steve Osburn, 360-697-5982
7/19	Trail Maintenance with WTA	Kevin Koski, 360-373-7429, or www.wta.org
7/19-7/20	Climb Mt. Adams via the South Spur Route	Doug Savage, 360-698-9774
7/25	July Potluck	Charlie Pomfret, 360-479-7820
7/26-7/27	Overnight on Marmot Pass	Doug Savage/Venita Goodrich, 360-698-9774

	S	M	T	W	Th	F	S
J			1	2	3	4	5
U	6	7	8	9	10	11	12
L	13	14	15	16	17	18	19
Y	20	21	22	23	24	25	26
	27	28	29	30	31		

	S	M	T	W	Th	F	S
A						1	2
U	3	4	5	6	7	8	9
G	10	11	12	13	14	15	16
S	17	18	19	20	21	22	23
	24	25	26	27	28	29	30
	31						



## Outings

---

### A Word About Outings

All PWC outings and other activities are open to anyone, but if you enjoy our company and what we do, we would like you to become a member. The persons sponsoring trips should not be considered instructors or leaders. If you are unsure of your abilities, discuss the trip thoroughly with the organizer. Each participant is responsible for his or her own comfort and safety on any outing. Always carry the 10 essentials.

### Pet Policy

Please leave pets at home when attending PWC outings unless the trip is specifically listed as welcoming them.

### Please Call Early

As a courtesy to the sponsor of an outing in which you are interested, please try to call at least two days before the trip for single-day outings, and as soon as possible for overnight outings. This allows the sponsor time to make necessary arrangements, or alternate plans should a trip be canceled for some reason. Your consideration will be greatly appreciated.

---

### Illahee Preserve Work Parties

Various

Contact: Dale Boyle, dboyle@web-o.net, 360-792-1714

Dale is looking for volunteers to participate in monthly work parties at Illahee Preserve. Illahee Preserve is a 400-acre preserve in Bremerton, bordered by the streets Riddell, McWilliams, Fuson and Almira and by the Puget Sound. The goal of the work parties is to restore Illahee Creek as a salmon creek. If you are interested in doing some volunteer work close to home, contact Dale.

### Backpack Seven Lakes Basin (High Divide)

Thursday, July 3— Monday, July 7

Contact: Joan Edwards, 360-509-5297

Starts at the parking lot just beyond Sol Duc Hot Springs. We'll travel 7.5 miles to Heart Lake on Thursday, 4.5 miles Friday to Lunch Lake. Day hikes and exploring from Lunch Lake on Saturday and Sunday; we'll hike out downhill 7 miles on Monday. This trip is dependent on snow-pack. Total elevation gain 4,000 feet.

### Hike to Camp Muir

Wednesday, July 9 or Thursday, July 10

Contact: Doug Savage, 360-698-9774

Hike to Camp Muir; ski or glissade down.

### PWC Annual Picnic & Tall Tale Contest

Monday, July 14 at 6 pm at Raab Park in Poulsbo

Contact: Greg Myrick, 360-649-1648

Food and water will be provided by the club; bring any other beverages you'd like to drink. \*\* Please call Greg if you can assist with any of the jobs that need doing.

### Climb Mount Olympus

Thursday, July 17—Sunday, July 20

Contact: Gary Stringer, 206-780-6760

Climb Mount Olympus, the legendary home of the New World's gods.

### MTTA Trail Maintenance & Hike

Friday, July 18—Sunday, July 20

Contact: Emily Grice, 206-842-7883

Friday night, we'll camp at Cougar Rock Campground; Saturday, we'll do trail maintenance with MTTA and share dinner with fellow volunteers, returning to Cougar Rock for the night; and on Sunday, we can do a day hike in the area.

### Climb Mt. St. Helens

Friday, July 18—Sunday, July 20

Contact: Steve Osburn, 360-697-5982, email at:

Steven\_osburn@hotmail.com

We will leave on Friday evening after work and camp in the Mt. St. Helens area (if you want to join us on Sunday instead, that works, too). On Saturday, we'll find some local hikes and explore the area, and end up in camp Saturday night. We climb on Sunday, the 20th, and some of us plan to return on Monday. Right now, I have 3 climbing permit slots available.

### Trail Maintenance with WTA

Saturday, July 19

Contact: Kevin Koski, 360-373-7429 or [www.wta.org](http://www.wta.org)

### Climb Mt. Adams via the South Spur Route

Saturday, July 19—Sunday, July 20

Contact: Doug Savage, 360-698-9774

### Overnight on Marmot Pass

Saturday, July 26 - Sunday July 27

Contact: Doug Savage/Venita Goodrich, 360-698-9774

Hike the Upper Big Quilcene Trail to Marmot Pass at 6000 feet. 10.6 miles round-trip, 3500 feet of elevation gain.

### Bailey Range Traverse

Saturday, Aug 9 - Saturday, Aug. 16

Contact: Gary Stringer, 206-780-6760

We'll go through Appleton Pass and come out at Whiskey Bend. Mountaineering experience required. Limit 6 people.

### Hike the East Side of the Wonderland Trail

Friday, August 8—Sunday August 10.

Contact: Emily Grice, 206-842-7883

Camp at White River Campground on Friday. Hike up or down to a Wonderland Trail site on Saturday night. First choice is Summerland Trail, of moderate length and pace.

## More Outings

---

### Hike and Camp at Ingalls Lake

Friday, August 8 - Sunday, August 10  
Contact: Brian Steely, 360-297-3825

Ingalls Lake sits just below Mt. Stuart, a lovely, huge chunk of granite. You don't have to climb Mt. Stuart to enjoy it. We'll camp Friday night and meet at the parking lot Saturday morning at the end of Teanaway Rd. out of Cle Elum. We climb up on the ridge, then turn left and camp at a spectacular meadow just before Ingalls Lake. Spend the next day hiking around Ingalls Lake and venture as far as your comfort zone takes you on the west side of the mountain. If you paint, bring your watercolors.

### Backpack to Toleak Point, ONP Ocean Beach

Friday, August 15 - Sunday, August 17  
Contact: Lynn Howat, 360-598-3087

6-1/2 miles each way through the forest, along the beach, and over headlands. Wild forest and wild ocean, animals and sea birds, tidal pools and wave-carved sea stacks are all part of the experience of this section of the Washington coast. We'll leave early Friday morning to catch the tides to hike in and camp 2 nights at Toleak Point. On Saturday, one can relax and check out tide pools or hike further south (for the day) to Mosquito Creek. On Sunday, we can do some tide-pooling, hike out, and head home.

### Backpack LaCrosse Basin

Monday, August 18—Friday, August 22 (DATE CHANGE)  
Contact: John and Ellen Knott, 360-710-1158

We plan to go up the Duckabush, and make camp at Lake LaCrosse. We should see great meteor showers during this time in August.

### Hike to Camp Muir

Wednesday, August 20 - Thursday, August 21  
Contact: Sue DeArman, 360-697-1352, or  
Chris Warmedahl, 360-895-7719

Camp overnight Wednesday at the Cougar Rock campground. Get an early start for the hike to Camp Muir and, with some luck, enjoy a great glissade down.

### Lake Angeles Hike and Swim

Sunday, August 24  
Contact: Karla Piecuch, 360-598-3601

We're depending on a hot day for this hike to Lake Angeles and (for those not intimidated by COLD water) invigorating swim to the island in the middle of this alpine lake. Bring your own refreshing drinks to enjoy lakeside.

### Trail Maintenance at Waptus Lake

Saturday, August 30 - Saturday, September 6  
Contact: [www.wta.org](http://www.wta.org)

Join Kevin and Maria for the Waptus Lake week of trail maintenance, near Cle Elum.

### Yellow Astor Butte

Saturday, September 20—Sunday, September 21  
Contact: Kevin Koski, 360-373-7429

### Bicycle the George S. Mickelson Trail

Friday, Sept. 26—Monday, Sept. 29, plus travel time.  
Contact: Bob Brown, 360-569-2878 or e-mail at [mtta@skimtta.com](mailto:mtta@skimtta.com)

Join Bob Brown of MTTA fame for a trip to South Dakota. The Mickelson is 108 miles of old railroad grade in the rolling Black Hills of South Dakota. Many options for things to do in the area as well as along the way. Check out the web site for the trail. This is a casual ride of about 30 miles a day on a mountain bike with lots of wildlife and some history along the way.

[www.sdgfp.info/parks/regions/northernhills/mickelsontrail/](http://www.sdgfp.info/parks/regions/northernhills/mickelsontrail/)

or if you are desperate, you can try to contact Rod Henderson at [rod\\_henderson98367@yahoo.com](mailto:rod_henderson98367@yahoo.com) for more info.

### Goat Rocks

Saturday, September 27—Sunday, September 28  
Contact: Kevin Koski, 360-373-7429

### Koski's Annual Larch Trip

Saturday, October 11—Monday, October 13  
Contact: Kevin Koski, 360-373-7429

### Coming In 2009.....Climb Aconcagua: the tallest peak in the Americas

Sunday, January 4, 2009 - Thursday, January 22, 2009  
Contact: Doug Savage, 360-698-9774

Join Doug on his long-awaited trip to climb the Stone Sentinel, Aconcagua, at 22,841 feet, in the Andes. This is a non-technical climb, but very demanding. For more information, contact Doug.

### A Thank-You from Karla

On page 6 you will see a photographic "trip report" of Doug's PWC Mt. Ellinor outing. I just want to say THANK YOU to all the PWCers who have sent cards and made calls, wishing me a speedy recovery! They were much appreciated. And a BIG THANKS, too, to everyone with us that day, who were so thoughtful, patient, and helpful during the slow progress down. I'm sure it wasn't the way you planned your day to end!! YOU ARE ALL THE BEST!

**Note:** Mountaineer leader Toby Tahja-Syrett has written a detailed, 11-page report of the rescue, complete with his photographs. For those interested in it, just send me an email at the Penwicle, and I'll email the PDF to you. You can also view his photos at: [www.flickr.com/photos/tobbes73](http://www.flickr.com/photos/tobbes73)

## Of Interest to Members

---

### **Nature Photography Workshop**

**Friday, Sept. 12 to Sunday, Sept. 14, 2008**

I wish to thank those PWCers who helped to make our spring Nature Photography Workshop a big success. Because we could not accommodate all the people who wished to attend, we added this fall workshop.

Join nature photographers Don Paulson and Laurie Usher for an exciting three-day exploration of *Nature Photography in a Digital Age*. This special workshop will be based at the Seabeck Conference Center.

**Cost:** Workshop with meals and lodging: \$350 per person based on double occupancy; single occupancy \$390; an accompanying guest \$155 (meals and lodging only).

**More Info:** Visit [www.donpaulson.com](http://www.donpaulson.com)

### **Olympic Mountain Rescue receives Birkenfeld Memorial Trust award.**

The Birkenfeld Memorial Trust recently awarded \$26,000 to the Bremerton-based search and rescue unit, Olympic Mountain Rescue. This grant, combined with previous donations, has allowed the unit to replace its 17-year-old rescue vehicle with a specially-outfitted 2008 Ford F350. This new vehicle is now fully operational and was deployed May 31<sup>st</sup> on its first mission, supporting the helicopter evacuation of 3 injured climbers from Mt. Ellinor in the Olympic Mountains.

C. Keith Birkenfeld was born in 1939 and grew up in Bremerton. After graduating from the University of Washington in 1963 and doing follow-up studies at Seattle University, he became a teacher in Bellevue. He retired early for medical reasons, and (taking his doctor's advice) he began taking sea voyages to restore his health. Though he always considered Kitsap County his home, he traveled the world over and had a second home in Palm Springs where he was known to hobnob with stars like Bob Hope and Ginger Rogers. Never earning more than \$21,500 a year, Mr. Birkenfeld still found the means to invest in real estate, stocks and bonds. These investments combined with his notoriously thrifty lifestyle allowed him to establish an estate valued at \$18 million.

When he died in September of 2005, he designated \$13.5 million dollars to establish the C. Keith Birkenfeld Memorial Trust. He wanted this trust to focus primarily on supporting causes that directly benefited the communities of his beloved Kitsap County. The trust, administered by the Seattle Foundation, began awarding grants in 2007 and will continue for the next 20 years.

Olympic Mountain Rescue is an entirely volunteer, non-profit search and rescue unit operating out of Kitsap County, Washington. The unit was founded in 1957 and is one of seven mountain-rescue units operating within Washington as part of the nationwide Mountain Rescue Association. The unit's primary mission is to assist individuals who have become lost or injured in the wilderness regions of the Pacific Northwest. Olympic Mountain Rescue directly serves the over 143,000 individuals per year who visit the backcountry areas of the Olympic National Park and Forest by maintaining the ability to deploy search and rescue teams 24 hours per day, year-round. These specially-trained teams are equipped to operate independently for 2-3 days in any backcountry environment including the 3000 square miles of wilderness and 160 significant peaks of the Olympic Peninsula.

Other key supporters of this new vehicle include: Markay Cabinets of Poulsbo, WA; Sea Home Services of Quilcene, WA; Mr. Roy Becket of Seabeck, WA; The Bushwacker Climbing Club of Seattle, WA; Jefferson County Search and Rescue, and Mr. Paul Plevich of Pickerington, OH.

### **North Kitsap Trails Association—Trail User's Committee**

#### **Invitation to User Group Meeting**

**Wed, June 25, 2:30—4:30, OPG Meeting Room, 19245 - 10th Avenue, Poulsbo**

Agenda will include: Updates on: what has been going on with NKTA, Paddle Kitsap, Old Mill Days. There will also be time for an Open Conversation, as well as looking to sign up volunteers for Future Fest on August 2-3 and Forest Fest on September 28. RSVP if you can attend to: [john@radicallyinclined.com](mailto:john@radicallyinclined.com)  
Questions? Call John (Hawkins) at 360-621-1131.

### **Book Signing**

Seabury Blair has a new hiking book out and is scheduled for a book-signing at Barnes and Noble Book-sellers in the Kitsap Mall in Silverdale on July 12, from 3-5 pm. For more information, call the bookstore at 698-0945.

## Photos from Mt. Ellinor 5/31/08



It was a beautiful day as we headed up the chute. Photo: Sue DeArman

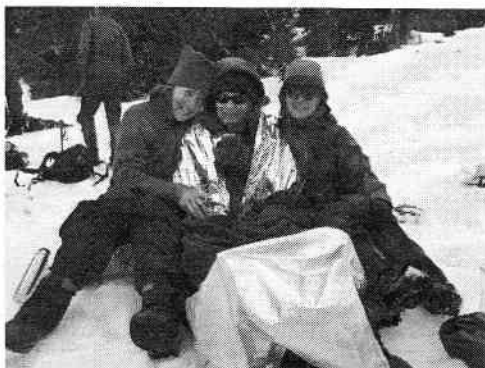
Olympia Mountaineers alpine scrambling class was also on the summit. This was the group who later assisted Karla after her injury in the chute. PWCer Cathy Palzkill lower right. Photo: Olympia Mountaineers



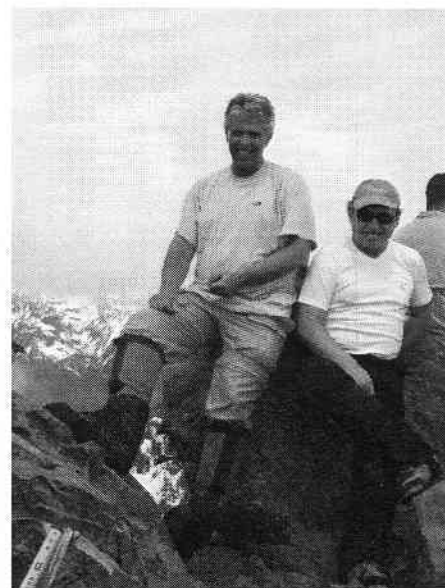
Olympia Mountaineers, Tim Nagle (below) Callie Meredith (above), assisting in lowering Karla (in the silver Burrito bag!) down the chute.

Photo: Olympia Mountaineers

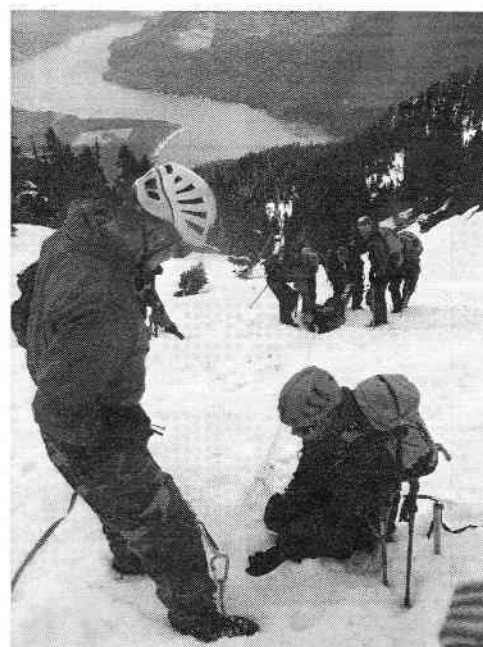
Nancy & Sue keep Karla warm!! Photo: Sue's camera



As the sun descended, Doug, Bob, Nancy and Sue built a fire for warmth. Photo: Sue DeArman



Bob Dormaier & Doug Savage relaxing on the summit. Photo: Sue DeArman



Teamwork: Toby Tahja-Syrett and his group setting up belay system. This photo gives a perspective of where we were. Photo: Olympia Mountaineers



Karla in the Stoke's litter, being taken out by Mason County Fire Dept. EMTs. Photo: Sue DeArman



## Club News

**Welcome to New Member:** Christine Grenier of Silverdale, and Bruce Rogers of Bremerton.

**Door Prize Winner** At the June meeting, Jim Drannan won a camp chair.

**Jon's Minute** At the June meeting, Doug Savage did Jon's Minute. He spoke about essential gear everyone going into the outdoors should carry: 6 ml rope (30 ft.), a rigid sit-pad, a stretchable self-adhesive bandage, a lightweight tarp, plus the 10 essentials. These can make a huge difference should an emergency situation occur.

### Meeting Refreshments

Thanks to all who brought snacks to the June meeting! Contact Doug Savage @ 360-698-9774 if you would like to bring snacks to the next meeting.

### We Need You!

Each month the club's MAP meeting and potluck dinner are in need of volunteer hosts willing to share their home for an evening. If you can handle a small home invasion, please contact the club secretary, Barbara Hager, at 360-692-5121.

### Sponsor an Outing

We are always looking for people to sponsor outings for the PWC. If you are planning a trip, let us know about it! Come to the MAP meeting the Thursday before the General Meeting to discuss your plan for a trip. You can submit trip descriptions to the PENWICLE by contacting Karla Piecuch at penwicle@hotmail.com or 360-598-3601. Planning a last-minute outing? No problem - post your trip on the PWC website by filling out the form at <http://www.pwckitsap.org/>

### Trip Reports & Photos Wanted

Do you have a great story to share about a recent trip? Karla Piecuch is looking for trip reports to print in the PENWICLE. Trip reports can be all text, all photos, or any combination of the two. There are no length requirements. Please send trip reports and photos to Karla at penwicle@hotmail.com

### Scrapbook Photos Wanted

Sue DeArman, our Scrapbook Editor, is looking for photos of PWC activities. Please include your name, details of the trip (date and location), and people and places in the pictures. Electronic photos are welcome, too. Contact Sue DeArman, 360-697-1352, dearmans@comcast.net

### Update Your Email Address

Does the PWC have your current email address? If not, contact Barbara Hager, Membership Coordinator, to update your email address and other contact information. Barbara can be reached at 360-692-5121 or [greenthumb@telebyte.com](mailto:greenthumb@telebyte.com)

### PWC Online...[www.pwckitsap.org](http://www.pwckitsap.org)

Please contact Venita Goodrich at 360-698-9774 for inquiries regarding the PWC website. Submissions to the editor of the PENWICLE will be sent to the website, unless requested otherwise.

## Club Business

### Joining the PWC or Membership Renewal

The PWC General Meeting is held the second Monday of each month, 7 pm, at the Kitsap Unitarian Universalist Fellowship in East Bremerton. To join or renew, please see form on back of newsletter. Receive a discount on select merchandise or services at the following businesses with your PWC membership, but check with vendor for details:

- Olympic Outdoor Center, Poulsbo
- Vertical World Climbing Gym, Bremerton
- Silverdale Cyclery, Silverdale
- Commander's Beach House Bed and Breakfast, Port Townsend
- Ajax Café, Port Hadlock
- Kitsap Sports, Silverdale
- Poulsbo Running, Poulsbo

New members will receive a membership card with their New Membership packet. All members can pick up a card at the monthly meeting.

### Address Changes and Member Address-Phone List

Address changes should be sent to Barbara Hager at Peninsula Wilderness Club

P.O. Box 323

Bremerton, WA 98337-0070,

or email [greenthumb@telebyte.com](mailto:greenthumb@telebyte.com), or call 360-692-5121.

Members should also contact Barbara if they wish to receive a new membership directory.

### PENWICLE Submissions

Submissions to the PENWICLE must be received by the Friday after the General Meeting to insure a place in the next issue. Contact Karla Piecuch at [penwicle@hotmail.com](mailto:penwicle@hotmail.com) or 360-598-3601.

## Officers & Staff

President:	Greg Myrick .....	360-649-1648
Vice President:	Erin Hennings.....	360-621-6961
Secretary:	Barbara Hager.....	360-692-5121
Treasurer:	Jill Hawes .....	360-275-5402
Board of Directors:	Dale Boyle.....	360-792-1714
	Venita Goodrich ..	360-698-9774
	Kevin Kilbridge ..	360-871-2537
	Kevin Koski .....	360-373-7429
Entertainment:	Joe Weigel.....	360-479-5116
Events:	Erin Hennings.....	360-621-6961
Refreshments:	Doug Savage.....	360-698-9774
Scrapbook:	Sue DeArman .....	360-697-1352
Membership Coordinator:	Barbara Hager.....	360-692-5121
Website Editor:	Venita Goodrich ..	360-698-9774
Penwicle Editor:	Karla Piecuch .....	360-598-3601
Penwicle Proofreader:	Steve Dikowski....	360-692-8386

**PWC****Join or Renew Membership****PWC**

The Peninsula Wilderness Club is an informal organization for persons interested in active outdoor pursuits. Main activities include hiking, backpacking, mountain climbing, rock climbing, and skiing. All outings, from casual hikes to technical mountain sports, are initiated by individual members. These members are volunteers who generously offer to make minimal arrangements so an outing can take place. They do not accept responsibility for the safety or care of any participant. The PWC does not conduct instructional programs and members are expected to have whatever clothing, equipment, skills, and physical conditioning are appropriate for the outing they wish to join. Members are expected to practice responsible environmental stewardship and must accept that there are dangers and a risk of injury in most outdoor activities.

Dues are \$25 per household per year. Send a check or money order to:

Peninsula Wilderness Club  
P.O. Box 323  
Bremerton, WA 98337-0070

Please check if: New Member(s) ☐      Renewing Member(s) ☐      Change of Address ☐

Name(s): \_\_\_\_\_

Mailing Address: \_\_\_\_\_

City, State, Zip: \_\_\_\_\_

Telephone: \_\_\_\_\_ E-mail: \_\_\_\_\_

(Please print clearly)

☐ Check here if you wish to receive the newsletter as an Adobe PDF document by e-mail INSTEAD OF a printed copy.

☐ Check here if you do NOT wish any information to be included in the list distributed to members.



JULY 2008 - Time Dated Material  
Reproduced Using Recycled Paper



Peninsula Wilderness Club  
P.O. Box 323  
Bremerton, WA 98337-0070

