

NOVEMBER
2006

PENINSULA

Peninsula Wilderness Club meets on the second Monday of every month at 7 pm at the Kitsap Unitarian Universalist Fellowship on Perry Avenue in East Bremerton. The public is cordially invited.

Flight of the *Osprey*

Monday, November 13, 7 pm
Presented by: Kurt & PL Mondloch

After raising their son and daughter, Kurt and PL Mondloch decide to circumnavigate the world aboard their sloop, the *Osprey*. As they prepare for their voyage in San Francisco, they receive a disturbing message. Their son, on a backpacking expedition to India, has gone missing.

Kurt flies to the Indian Himalayas to try to find him, sparking a major international investigation and dragging the family into a world they never imagined. Eventually, an overseas phone call destroys the couple's fragile cocoon of hope—their son and his girlfriend were swept away by a monsoon-swollen river.

Reeling from the death of their son, Kurt and PL must make a choice: either to mourn endlessly or move on with life.

The couple decides to sail around the world as a balm for their spirits and as a tribute to their late son. Over the course of almost seven years and an incredible journey of 40,000 miles, their phenomenal memories and fresh horizons help extinguish the pain and recharge their lives.

Kurt and PL will be sharing the story of their trip around the world at the November General Meeting. If you would like to know more about their story, check out the website for Kurt's book, [Flight of the Osprey](#), at www.flightoftheosprey.com



PWC Officer & Board Elections

At the October General Meeting, elections were held for PWC Officers and Board of Directors. Congratulations to our new Officers and Board!

President: Tom Rogers
Vice President: Greg Myrick
Secretary: Barbara Hager
Treasurer: Jill Hawes

Board: Dale Boyle
Venita Goodrich
Brian Steely

Monthly

MAP: Monthly Activity Planning

Thursday, November 9, 7 pm

Contact: Tom Leurquin, 206-842-5906

Discuss club business and help schedule outings at Tom's house on Bainbridge Island.

November Potluck

There will not be a Potluck in November due to the Thanksgiving holiday.

Date

11/4

Outing / Meeting

MTTA Annual Fall Gala at Seattle REI

11/4

Rock Climb at Cushman Cliffs

11/5

Tunnel Creek Hike

11/5

Hike Kelly Butte

11/9

MAP: Monthly Activity Planning

11/13

General Meeting

11/25

Snowshoe or Cross-Country Ski at Paradise

Contact

Erin Hennings, 360-621-6961

Tom Campbell, 360-297-0031

Chris Warmedahl, 360-895-7719

Kevin Koski, 360-373-7429

Tom Leurquin, 206-842-5906

Tom Rogers, 360-692-2547

Barney Bernhard, 360-479-3679

	S	M	T	W	Th	F	S		S	M	T	W	Th	F	S
N O V E M B E R				1	2	3	4	D E C E M B E R						1	2
	5	6	7	8	9	10	11		3	4	5	6	7	8	9
	12	13	14	15	16	17	18		10	11	12	13	14	15	16
	19	20	21	22	23	24	25		17	18	19	20	21	22	23
	26	27	28	29	30				24	25	26	27	28	29	30

31

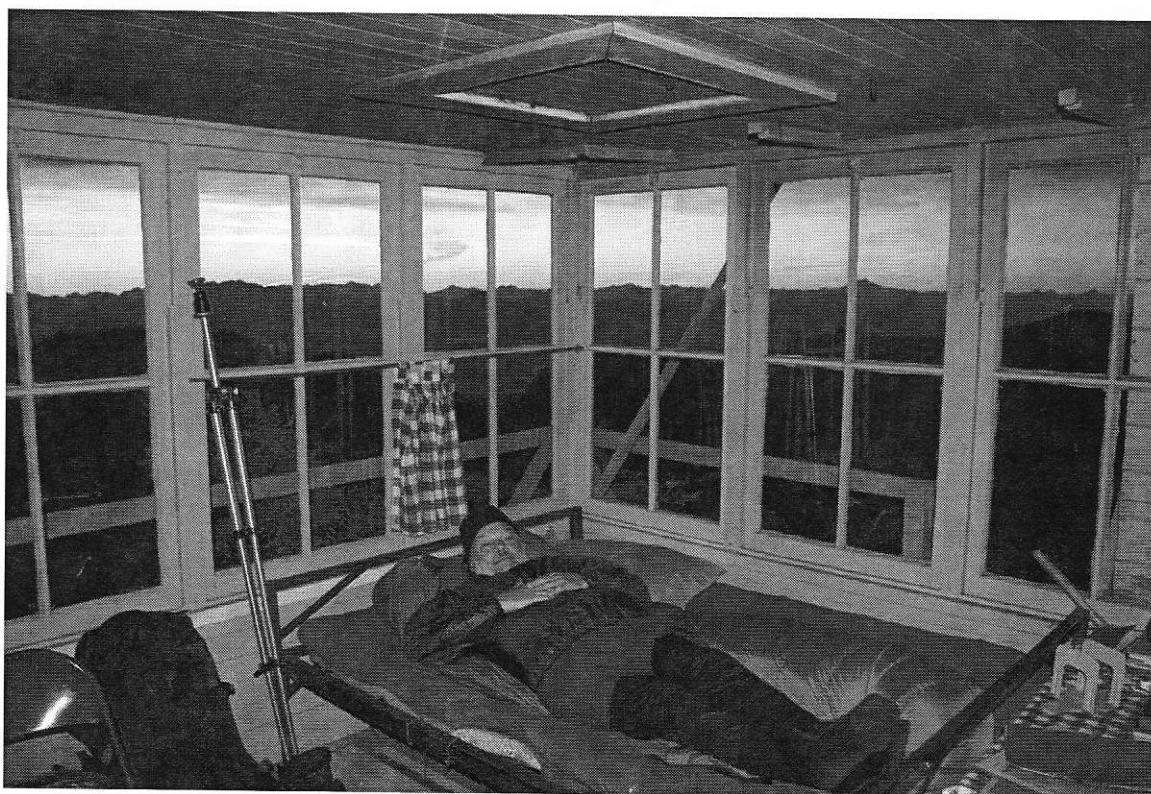


Photo courtesy of Jon DeArman

Outings

A Word About Outings

All PWC outings and other activities are open to anyone, but if you enjoy our company and what we do, we would like you to become a member. The persons sponsoring trips should not be considered instructors or leaders. If you are unsure of your abilities, discuss the trip thoroughly with the organizer. Each participant is responsible for his or her own comfort and safety on any outing. Always carry the 10 essentials.

Pet Policy

Please leave pets at home when attending PWC outings unless the trip is specifically listed as welcoming them.

Please Call Early

As a courtesy to the sponsor of an outing in which you are interested, please try to call at least two days before the trip for single-day outings, and as soon as possible for overnight outings. This allows the sponsor time to make necessary arrangements, or alternate plans should a trip be canceled for some reason. Your consideration will be greatly appreciated.

MTTA Annual Fall Gala at Seattle REI

Saturday, November 4, 2-6 pm

Contact: Erin Hennings, 360-621-6961

Mount Tahoma Trails Association has North America's largest no-fee, hut-to-hut trail system. MTTA begins accepting reservations for the winter season at the Gala, and by the end of the afternoon, nearly all the weekend reservations are taken. Last year, the PWC was able to reserve three weekends in the huts, thanks to PWC members who attended the Gala. If you are interested in skiing or snowshoeing the MTTA trails this winter, join us for the Gala at the Seattle REI. Attendees get first picks on the weekends the PWC reserves. For more information, see the enclosed flyer, or go to <http://www.skimtta.com/>

Rock Climb at Cushman Cliffs

Saturday, November 4

Contact: Tom Campbell, 360-297-0031,
tomrcampbell@gmail.com

Wet weather or forest fire will change our objective to a hike to Ellinor towers to scout the climbs there.

Tunnel Creek Hike

Sunday, November 5

Contact: Chris Warmedahl, 360-895-7719

This is a moderately strenuous hike just under 9 miles round trip, elevation gain about 2550 feet. The trail ascends through a beautiful old growth hemlock and silver fir forest, following the creek. Beyond the Tunnel Creek Shelter, the trail steepens, passes two lakes and climbs to 5050 Pass. If the weather is good, we will continue up to a ridge with excellent views of Mt. Constance and other peaks.

Hike Kelly Butte

Sunday, November 5

Contact: Kevin Koski, 360-373-7429

I understand that this is about the last piece of land south of Snoqualmie Pass that has not been clear-cut. The Green Trails map shows a way trail, but I understand that the start of the trail is hard to locate, so there may be a little bushwhacking at the start, or possibly the whole day. So, if you are interested in exploring an infrequently hiked area, feel free to join me. The trip will probably be 10 miles round trip with 3500 feet of elevation gain.

Snowshoe or Cross-Country Ski at Paradise

Saturday, November 25

Contact: Barney Bernhard, 360-479-3679

With the anticipation of snowfall in the mountains, make plans to experience this first snowshoe and cross-country ski trip of the season to Mt. Rainier.

Methow Valley Cross-Country Ski Trip

Friday, January 12 - Tuesday, January 16, 2007

Contact: Emily Grice, 206-842-7883

Explore 200 km of groomed cross-country ski trails in the beautiful Methow Valley.

Winterfest at Stevens Pass

Friday, February 16 - Monday, February 19, 2007

Contact: Tom Rogers, 360-692-2547

Join us for downhill skiing, cross-country skiing and snowshoeing at Stevens Pass. We'll stay at the Mountaineers' Lodge, where you can ski directly from the cabin to the lift line!

Announcements

Nordic Ski Patrollers Wanted

Contact: Doug Savage, 360-698-9774

MTTA is looking for volunteers for Ski Patrol this season. Ski Patrollers are "ambassadors of goodwill" on the trail: the most important part of the job is making sure all trail users are having a good time! Patrollers can cross-country ski or snowshoe. All training (First Aid, CPR, avalanche awareness, trail grooming, hut operations and office procedures) is provided by MTTA. A training session is scheduled for Saturday, November 11, in Ashford, WA. For more information, see the enclosed flyer, or go to <http://www.skimtta.com/>

Join us for Mount Tahoma Trail Association's

Fall Gala 2006

**A fun afternoon supporting the Northwest's largest
User-Operated, Hut-to-Hut Ski Trail System**



Your First Chance for Winter Hut Reservations!

Saturday, November 4th, 2006

2:00 PM - 6:00 PM

REI's Seattle Store, 2nd Floor Auditorium
222 Yale Ave N, Seattle, WA 98109 (888) 873-1938.

\$10 per person, Cash or checks only

- **Outdoor Equipment Auction**
- **Raffle Prizes**
- **Snacks & Drinks**
- **Become a member**
- **Renew your membership**
- **Hut Reservations Lottery**

Learn about MTTA. We are a nonprofit organization that operates four backcountry huts and over 50 miles of trails near Rainier National Park. We have groomed and backcountry trails for skiers, snowshoers and snowboarders of all abilities! Come checkout the views, the fun and learn more.

Support our no-fee backcountry. We charge no fees to use our backcountry ski trails and only \$5 per person to make hut reservations. We rely on the Gala to raise much of our operating expenses. Please help us by attending, becoming a member, and joining in the fun of the silent auction and prize lottery!

It's your first chance for winter hut reservations! Most Saturday night hut stays are reserved at our Gala. Each attendee will have their name entered in a lottery for hut reservations. Names picked will have their choice of remaining dates and huts. Invite your friends to increase your odds!

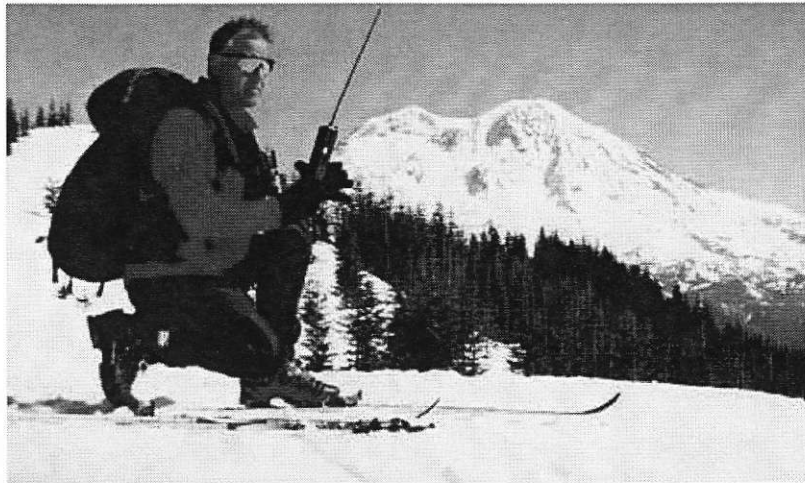
Mark your calendars today!

Learn more at: www.skimtta.com

MTTA PO Box 206 Ashford, WA 98304 mtta@skimtta.com

MTTA Nordic Ski Patrol

More Backcountry Adventures and Camaraderie!



Do you love winter in the mountains? Snowshoeing or cross-country skiing adventures? Helping others have a fun and safe time in the backcountry?

Join our Nordic Ski Patrol to patrol our backcountry, groom trails, and help others enjoy the system. It's a great way to regularly get outdoors, improve your backcountry skills, make new friends and join in the camaraderie of the mountains. Volunteers patrol at least one day a month during the winter season and spend one day staffing MTTA's office in Ashford.

Here's what we do:

- Patrol the ski trails using two-way radios
- Serve as a Goodwill Ambassador to all trail-users
- Oversee hut utilization and stay in the huts overnight
- Staff the MTTA Office in Ashford on weekends
- Act as First Aid emergency response team in a wilderness setting

Additionally, most of our patrollers learn to operate snowmobiles and groom trails.

Qualifications:

- Love of the mountains and snow
- Ability to interact with people of all ranges and abilities
- Novice or intermediate ski or snowshoe ability

Requirements:

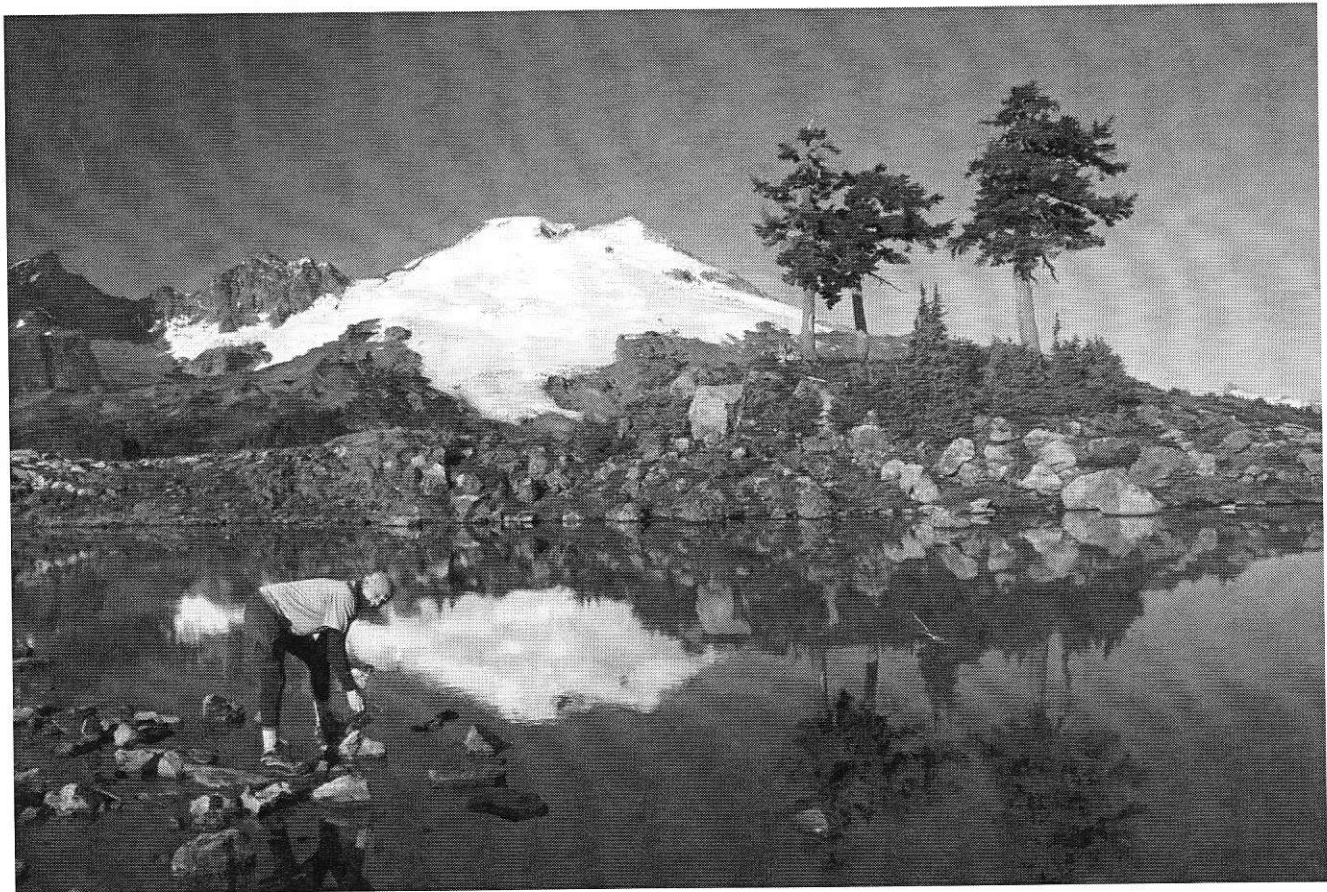
- Be or become a MTTA member.
- Attend an annual patrol training class, and sign a Department of Natural Resources waiver.
- Have a valid First Aid / CPR card, or attend a First Aid class which is provided at a low cost.
- Have attended an Avalanche class, or attend a class which is provided by MTTA.



We hope you'll join our team. If you want to sign up or have questions, please contact Doug Savage, 360-698-9774.

Photos

Photos courtesy of Jon DeArman



Club News

Door Prize Winners

At the October meeting, guest presenter Seabury Blair Jr. donated 5 signed copies of his book *Backcountry Ski Washington!* The lucky winners were: Rick McNicholas, John Knott, Vicki Fleming, Barney Bernhard and Gayla Perini.

Meeting Refreshments

Thanks to everyone who brought treats to the October meeting! Contact Doug Savage @ 360-698-9774 if you would like to bring snacks to the next meeting.

Jon's Minute

At the October meeting, Jon talked about cardboard stove stands for winter camping.

We Need You!

Each month the club's MAP meeting and potluck dinner are in need of volunteer hosts willing to share their home for an evening. If you can handle a small home invasion, please contact the club secretary, Barbara Hager, at 360-692-5121.

Sponsor an Outing

We are always looking for people to sponsor outings for the PWC. If you are planning a trip, let us know about it! Come to the MAP meeting the Thursday before the General Meeting to discuss your plan for a trip. You can submit trip descriptions to the PENWICLE by contacting Erin Hennings at penwicle@hotmail.com or 360-621-6961. Planning a last-minute outing? No problem - post your trip on the PWC website by filling out the form at <http://www.pwckitsap.org/>

Trip Reports & Photos Wanted

Do you have a great story to share about a recent trip? Erin Hennings is looking for trip reports to print in the PENWICLE. Trip reports can be all text, all photos, or any combination of the two. There are no length requirements. Please send trip reports and photos to Erin at penwicle@hotmail.com

Scrapbook Photos Wanted

Bethany Cecere, our Scrapbook Editor, is looking for photos of PWC activities. Please include your name, details of the trip (date and location), people and places in the pictures and whether you need the pictures back. Electronic photos are welcome, too. Contact Bethany Cecere, 360-243-8533, bethany.cecere@comcast.net

Update Your Email Address

Does the PWC have your current email address? If not, contact Barbara Hager, Membership Coordinator, to update your email address and other contact information. Barbara can be reached at 360-692-5121 or greenthumb@telebyte.com

New Contact Info - John & Ellen Knott

Update your PWC phone list! John & Ellen Knott have a new home phone number, 360-710-1158. Ellen's business number is 360-471-3064.

Club Business

Joining the PWC or Membership Renewal

The PWC General Meeting is held the second Monday of each month, 7 pm, at the Kitsap Unitarian Universalist Fellowship in East Bremerton. To join or renew, please see form on back of newsletter. Receive a discount on select merchandise or services at the following businesses with your PWC membership, but check with vendor for details:

- Olympic Outdoor Center, Poulsbo
- Vertical World Climbing Gym, Bremerton
- Silverdale Cyclery, Silverdale
- Commander's Beach House Bed and Breakfast, Port Townsend
- Ajax Café, Port Hadlock
- Kitsap Sports, Silverdale
- Poulsbo Running, Poulsbo

New members will receive a membership card with their New Membership packet. All members can pick up a card at the monthly meeting.

Address Changes and Member Address-Phone List

Address changes should be sent to Barbara Hager at Peninsula Wilderness Club, P.O. Box 323, Bremerton, WA 98337-0070, or email greenthumb@telebyte.com, or call 360-692-5121. Members should also contact Barbara if they wish to receive a new membership directory.

PENWICLE Submissions

Submissions to the PENWICLE must be received by the Friday after the General Meeting to insure a place in the next issue. Contact Erin Hennings at penwicle@hotmail.com or 360-621-6961.

PWC Online...www.pwckitsap.org

Please contact Venita Goodrich at 360-698-9774 for inquiries regarding the PWC website. Submissions to the editor of the PENWICLE will be sent to the website, unless requested otherwise.

Officers & Staff

President:	Tom Rogers..... 360-692-2547
Vice President:	Greg Myrick..... 360-297-2775
Secretary:	Barbara Hager 360-692-5121
Treasurer:	Jill Hawes..... 360-275-5402
Board of Directors:	Dale Boyle..... 360-792-1714
	Venita Goodrich... 360-698-9774
	Brian Steely 360-297-3825
Entertainment:	Joe Weigel..... 360-479-5116
Events:	Greg Myrick..... 360-297-2775
Refreshments:	Doug Savage 360-698-9774
Scrapbook:	Bethany Cecere 360-243-8533
Membership Coordinator:	Barbara Hager 360-692-5121
Website Editor:	Venita Goodrich... 360-698-9774
Penwicle Editor:	Erin Hennings 360-621-6961
Penwicle Proofreader:	Steve Dikowski 360-692-8386

PWC

Join or Renew Membership

PWC

The Peninsula Wilderness Club is an informal organization for persons interested in active outdoor pursuits. Main activities include hiking, backpacking, mountain climbing, rock climbing, and skiing. All outings, from casual hikes to technical mountain sports, are initiated by individual members. These members are volunteers who generously offer to make minimal arrangements so an outing can take place. They do not accept responsibility for the safety or care of any participant. The PWC does not conduct instructional programs and members are expected to have whatever clothing, equipment, skills, and physical conditioning are appropriate for the outing they wish to join. Members are expected to practice responsible environmental stewardship and must accept that there are dangers and a risk of injury in most outdoor activities.

Dues are \$25 per household per year. Send a check or money order to:

Peninsula Wilderness Club, P.O. Box 323, Bremerton, WA 98337-0070

Please check if: New Member(s) ☐ Renewing Member(s) ☐ Change of Address ☐

Name(s): _____

Mailing Address: _____

City, State, Zip: _____

Telephone: _____ E-mail: _____

(Please print clearly)

☐ Check here if you wish to receive the newsletter as an Adobe PDF document by e-mail **instead of** a printed copy.

☐ Check here if you **do not** wish any information to be included in the list distributed to members.



NOVEMBER 2006 - Time Dated Material
Reproduced Using Recycled Paper



Peninsula Wilderness Club
P.O. Box 323
Bremerton, WA 98337-0070